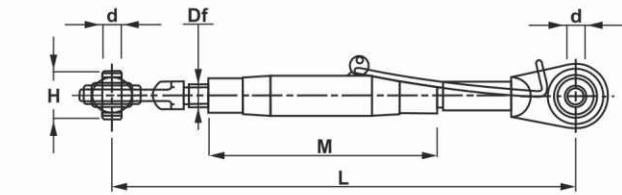
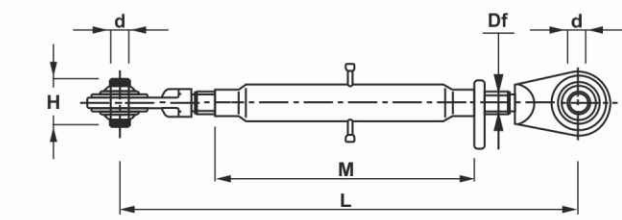


Code No.	Cat.	d (A12)	H (h11)	Df	M	L		Threaded Rod		Weight Kg.
						Min.	Max.	DX	SX	
TL 10005	1	19	44	M22 x 2.5	150	260	350	TF 10300 DX	TF 10310 SX	1.70
TL 10010	1	19	44	M22 x 2.5	230	345	490	TF 10300 DX	TF 10310 SX	2.40
TL 10020	1	19	44	M22 x 2.5	280	390	540	TF 10300 DX	TF 10310 SX	2.62
TL 10030	1	19	44	M22 x 2.5	300	410	560	TF 10300 DX	TF 10310 SX	2.84
TL 10040	1	19	44	M24 x 2.5	320	430	570	TF 10320 DX	TF 10330 SX	2.96
TL 10050	1	19	44	M24 x 2.5	370	480	620	TF 10320 DX	TF 10330 SX	3.04
TL 10060	1	19	44	M24 x 2.5	470	580	720	TF 10320 DX	TF 10330 SX	3.48
TL 10065	1	19	44	M27 x 3	220	330	450	TF 10340 DX	TF 10350 SX	3.00
TL 10070	1	19	44	M27 x 3	320	430	630	TF 10340 DX	TF 10350 SX	3.56
TL 10080	1	19	44	M27 x 3	370	480	680	TF 10340 DX	TF 10350 SX	3.76
TL 10083	1	19	44	M27 x 3	400	510	710	TF 10340 DX	TF 10350 SX	3.88
TL 10085	1	19	44	M27 x 3	430	540	740	TF 10340 DX	TF 10350 SX	3.98
TL 10090	1	19	44	M27 x 3	470	580	780	TF 10340 DX	TF 10350 SX	4.18
TL 10100	1	19	44	M27 x 3	570	680	880	TF 10340 DX	TF 10350 SX	4.62
TL 10110	1/2	19/25.4	44/51	M27 x 3	470	585	800	TF 10340 DX	TF 10390 SX	4.54
TL 10115	2	25.4	51	M27 x 3	220	340	460	TF 10380 DX	TF 10390 SX	3.54
TL 10120	2	25.4	51	M27 x 3	320	460	680	TF 10380 DX	TF 10390 SX	4.24
TL 10125	2	25.4	51	M27 x 3	400	520	740	TF 10380 DX	TF 10390 SX	4.60
TL 10130	2	25.4	51	M27 x 3	430	550	770	TF 10380 DX	TF 10390 SX	4.70
TL 10132	2	25.4	51	M27 x 3	500	620	840	TF 10380 DX	TF 10390 SX	5.04
TL 10135	2	25.4	51	M30 x 3	360	480	710	TF 10400 DX	TF 10410 SX	4.86
TL 10138	2	25.4	51	M30 x 3	400	520	750	TF 10400 DX	TF 10410 SX	5.02
TL 10140	2	25.4	51	M30 x 3	430	550	780	TF 10400 DX	TF 10410 SX	5.14
TL 10150	2	25.4	51	M30 x 3	470	590	820	TF 10400 DX	TF 10410 SX	5.32
TL 10155	2	25.4	51	M30 x 3	500	620	850	TF 10400 DX	TF 10410 SX	5.42
TL 10160	2	25.4	51	M30 x 3	530	650	880	TF 10400 DX	TF 10410 SX	5.56
TL 10170	2	25.4	51	M30 x 3	560	680	910	TF 10400 DX	TF 10410 SX	5.66
TL 10180	2	25.4	51	M30 x 3	610	730	960	TF 10400 DX	TF 10410 SX	5.82
TL 10190	2	25.4	51	M30 x 3	730	850	1080	TF 10400 DX	TF 10410 SX	6.38
TL 10200	2	25.4	51	M36 x 3	400	525	740	TF 10420 DX	TF 10430 SX	6.82
TL 10203	2	25.4	51	M36 x 3	460	585	800	TF 10420 DX	TF 10430 SX	7.28
TL 10205	2	25.4	51	M36 x 3	520	645	860	TF 10420 DX	TF 10430 SX	7.62
TL 10210	2	25.4	51	M36 x 3	570	695	910	TF 10420 DX	TF 10430 SX	8.14
TL 10215	2	25.4	51	M36 x 3	400	555	840	TF 10440 DX	TF 10450 SX	9.42
TL 10220	2/3	25.4/32	51/51	M36 x 3	400	555	840	TF 10440 DX	TF 10470 SX	9.32
TL 10225	3	32	51	M36 x 3	460	615	900	TF 10460 DX	TF 10470 SX	9.68
TL 10226	2	25.4	51	M40 x 3	500	635	860	TF 10475 DX	TF 10476 SX	9.10
TL 10227	2	25.4	51	M40 x 3	620	755	980	TF 10475 DX	TF 10476 SX	9.84



Code No.	Cat.	d	H (h11)	Df	M	L		Application	Weight Kg.
						Min.	Max.		
ASB 10229	1/2	20.2/25.4	44/51	UNC 1" 1/8 7G	318	545	790	John Deere	5.14

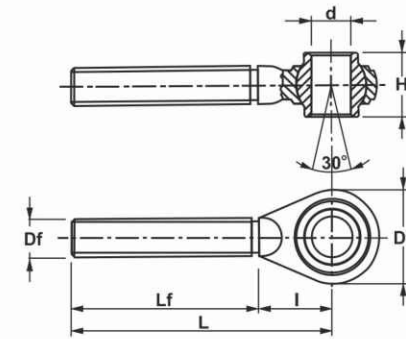


**Thread M30 x 3**

Code No.	Cat.	Pipe L1	Thread D	Min.	Max.
TL 3011370	1 - 1	370	M30 x 3	500	720
TL 3012370	1 - 2	370	M30 x 3	500	730
TL 3022370	2 - 2	370	M30 x 3	500	740
TL 3011400	1 - 1	400	M30 x 3	530	750
TL 3012400	1 - 2	400	M30 x 3	530	760
TL 3022400	2 - 2	400	M30 x 3	530	770
TL 3011450	1 - 1	450	M30 x 3	580	800
TL 3012450	1 - 2	450	M30 x 3	580	810
TL 3022450	2 - 2	450	M30 x 3	580	820
TL 3022460	2 - 2	460	M30 x 3	590	830
TL 3011500	1 - 1	500	M30 x 3	630	850
TL 3012500	1 - 2	500	M30 x 3	630	860
TL 3022500	2 - 2	500	M30 x 3	630	880
TL 3022520	2 - 2	520	M30 x 3	650	900
TL 3022550	2 - 2	550	M30 x 3	650	930
TL 3022560	2 - 2	560	M30 x 3	690	940
TL 3022600	2 - 2	600	M30 x 3	730	980
TL 3022650	2 - 2	650	M30 x 3	780	1030
TL 3022700	2 - 2	700	M30 x 3	830	1080
TL 3022720	2 - 2	720	M30 x 3	880	1100

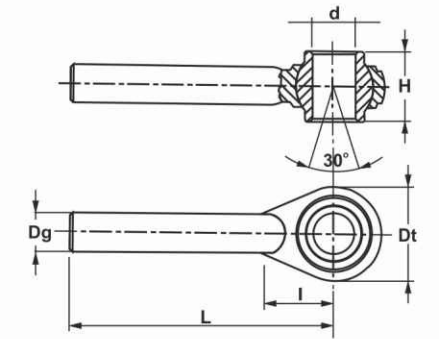


# TOP LINK END (UNC)



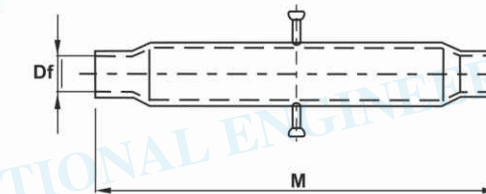
Code No.	Cat.	d (A12)	H (h11)	Df	L	Lf	I	Dt	Weight Kg.
EA 10300 DX	1	19	44	M22 x 2.5	165	115	50	58	0.71
EA 10310 SX	1	19	44	M22 x 2.5	165	115	50	58	0.71
EA 10320 DX	1	19	44	M24 x 2.5	165	115	50	58	0.82
EA 10330 SX	1	19	44	M24 x 2.5	165	115	50	58	0.82
EA 10321 DX	1	19	44	M24 x 2.5	165	115	50	62	0.85
EA 10322 SX	1	19	44	M24 x 2.5	165	115	50	62	0.85
EA 10333 DX	1	19	44	M24 x 3	165	115	50	62	0.86
EA 10334 SX	1	19	44	M24 x 3	165	115	50	62	0.86
EA 10338 DX	1	19	44	M24 x 3	205	155	50	62	0.98
EA 10339 SX	1	19	44	M24 x 3	205	155	50	62	0.98
EA 10335 DX	2	25.4	51	M24 x 3	220	165	55	75	1.32
EA 10336 SX	2	25.4	51	M24 x 3	220	165	55	75	1.32
EA 10340 DX	1	19	44	M27 x 3	205	155	50	58	1.08
EA 10350 SX	1	19	44	M27 x 3	205	155	50	58	1.08
EA 10345 DX	1	19	44	M27 x 3	205	155	50	62	1.12
EA 10346 SX	1	19	44	M27 x 3	205	155	50	62	1.12
EA 10380 DX	2	25.4	51	M27 x 3	220	165	55	75	1.44
EA 10390 SX	2	25.4	51	M27 x 3	220	165	55	75	1.44
EA 10355 DX	1	19	44	M30 x 3	225	175	50	62	1.36
EA 10356 SX	1	19	44	M30 x 3	225	175	50	62	1.36
EA 10400 DX	2	25.4	51	M30 x 3	220	165	55	75	1.62
EA 10410 SX	2	25.4	51	M30 x 3	220	165	55	75	1.62
EA 10358 DX	1	19	44	M30 x 3.5	225	175	50	62	1.34
EA 10359 SX	1	19	44	M30 x 3.5	225	175	50	62	1.34
EA 10415 DX	2	25.4	51	M30 x 3.5	220	165	55	75	1.60
EA 10416 SX	2	25.4	51	M30 x 3.5	220	165	55	75	1.60
EA 10420 DX	2	25.4	51	M36 x 3	220	165	55	80	2.14
EA 10430 SX	2	25.4	51	M36 x 3	220	165	55	80	2.14
EA 10440 DX	2	25.4	51	M36 x 3	270	200	70	96	3.44
EA 10450 SX	2	25.4	51	M36 x 3	270	200	70	96	3.44
EA 10460 DX	3	32	51	M36 x 3	270	200	70	96	3.34
EA 10470 SX	3	32	51	M36 x 3	270	200	70	96	3.34
EA 10475 DX	2	25.4	51	M40 x 3	230	170	60	80	2.74
EA 10476 SX	2	25.4	51	M40 x 3	230	170	60	80	2.74

# TOP LINK END (MM)



Code No.	Cat.	d (A12)	H (h11)	Dg (Ø)	L	I	Dt	Weight Kg.
BJ 10305	1	19	44	20	165	50	58	0.71
BJ 10312	1	19	44	22	165	50	58	0.82
BJ 10325	1	19	44	25	165	50	62	0.98
BJ 10342	1	19	44	25	205	50	58	1.14
BJ 10341	1	19	44	27	205	50	62	1.38
BJ 10343	1	19	44	29	225	50	62	1.50
BJ 10394	2	25.4	51	28	220	55	75	1.64
BJ 10395	2	25.4	51	30	220	55	75	1.76
BJ 10425	2	25.4	51	36	220	55	80	2.32
BJ 10445	2	25.4	51	37	270	75	96	3.80
BJ 10455	3	32	51	37	270	75	96	3.70
BJ 10474	2	25.4	51	43	230	60	80	3.20

## 3<sup>RD</sup> POINT TUBE



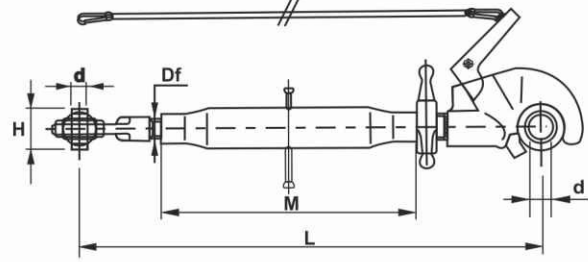
Code No.	M	Dt	Weight Kg.	Code No.	M	Dt	Weight Kg.
3PT 010	230	M22 x 2.5	0.90	3PT 135	360	M30 x 3	1.54
3PT 020	280	M22 x 2.5	1.10	3PT 138	400	M30 x 3	1.70
3PT 030	300	M22 x 2.5	1.32	3PT 140	430	M30 x 3	1.82
3PT 040	320	M24 x 2.5	1.22	3PT 150	470	M30 x 3	2.00
3PT 050	320	M24 x 2.5	1.30	3PT 155	500	M30 x 3	2.10
3PT 060	470	M24 x 2.5	1.74	3PT 160	530	M30 x 3	2.24
3PT 065	220	M27 x 3	0.92	3PT 170	560	M30 x 3	2.34
3PT 070	320	M27 x 3	1.26	3PT 180	610	M30 x 3	2.50
3PT 080	370	M27 x 3	1.50	3PT 190	730	M30 x 3	3.06
3PT 083	400	M27 x 3	1.60	3PT 200	400	M36 x 3	2.28
3PT 085	430	M27 x 3	1.68	3PT 225	460	M36 x 3	2.74
3PT 090	470	M27 x 3	1.90	3PT 205	520	M36 x 3	3.08
3PT 032	500	M27 x 3	2.02	3PT 210	570	M36 x 3	3.60
3PT 100	570	M27 x 3	2.36	3PT 226	500	M40 x 3	3.28
				3PT 227	620	M40 x 3	40.2



# TOP LINK HOOK



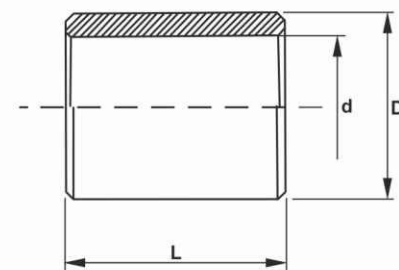
Top Link with Hook "Rapid" End Assemblies & Chain



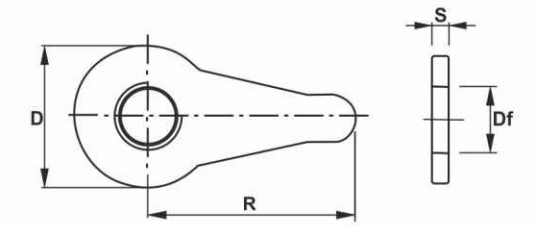
Code No.	Cat.	d (A12)	H (h11)	Df	M	L		Threaded Rod LHS	Threaded Rod RHS	Weight Kg.
						Min.	Max.			
TL 10070	2	25.4	51	M27 x 3	320	530	740	TF 10390 SX	GR 10980	6.24
TL 10080	2	25.4	51	M27 x 3	370	560	790	TF 10390 SX	GR 10980	6.48
TL 10085	2	25.4	51	M27 x 3	430	610	860	TF 10390 SX	GR 10980	6.56
TL 10090	2	25.4	51	M27 x 3	470	650	900	TF 10390 SX	GR 10980	6.78
TL 10100	2	25.4	51	M27 x 3	570	750	1000	TF 10390 SX	GR 10980	7.24
TL 10135	2	25.4	51	M30 x 3	360	550	790	TF 10410 SX	GR 10981	6.90
TL 10140	2	25.4	51	M30 x 3	430	610	850	TF 10410 SX	GR 10981	7.18
TL 10150	2	25.4	51	M30 x 3	470	650	890	TF 10410 SX	GR 10981	7.36
TL 10160	2	25.4	51	M30 x 3	530	710	950	TF 10410 SX	GR 10981	7.60
TL 10170	2	25.4	51	M30 x 3	560	740	980	TF 10410 SX	GR 10981	7.70
TL 10180	2	25.4	51	M30 x 3	610	790	1030	TF 10410 SX	GR 10981	7.86
TL 10190	2	25.4	51	M30 x 3	730	910	1150	TF 10410 SX	GR 10981	8.42
TL 10200	2	25.4	51	M36 x 3	400	610	840	TF 10430 SX	GR 10971	8.92
TL 10224	2	25.4	51	M36 x 3	460	670	900	TF 10430 SX	GR 10971	9.38
TL 10205	2	25.4	51	M36 x 3	520	730	960	TF 10430 SX	GR 10971	9.72
TL 10210	2	25.4	51	M36 x 3	570	780	1010	TF 10430 SX	GR 10971	10.24
TL 10220	3	32	51	M36 x 3	400	630	900	TF 10470 SX	GR 10972	12.41
TL 10225	3	32	51	M36 x 3	460	690	960	TF 10470 SX	GR 10972	12.87
TL 10206	3	32	51	M36 x 3	520	750	1020	TF 10470 SX	GR 10972	13.20
TL 10211	3	32	51	M36 x 3	570	800	1070	TF 10470 SX	GR 10972	13.72
TL 10226	2	25.4	51	M40 x 3	500	710	970	TF 10476 SX	GR 10973	13.20
TL 10227	2	25.4	51	M40 x 3	620	830	1090	TF 10476 SX	GR 10973	13.94

## CONVERSION BUSH

Code No.	Cat.	D	d	L	Application	Weight Kg.
CB 11225	3/2	37	28.4	44	Lower Lifting Arm	0.13
CB 11230	2/1	28.4	22.1	44	Lower Lifting Arm	0.08
CB 11240	2/1	25.4	19	51	3° Top Link	0.08
CB 11245	3/2	32	25.4	51	3° Top Link	0.12



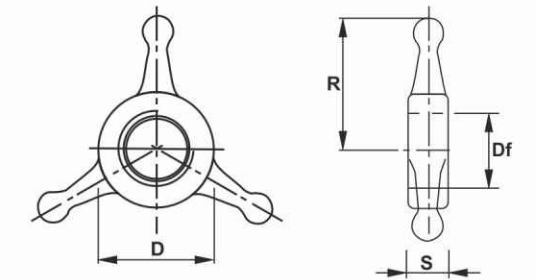
# TOP LINK LOCK NUT



Code No.		Df	D	R	S	Weight Kg.
TL 22	Wing Collar	M22 x 2.5	45	60	6	0.10
TL 24	Wing Collar	M24 x 2.5	45	60	6	0.10
TL 23	Wing Collar	M24 x 3	45	60	6	0.10
TL 25	Wing Collar	M27 x 3	45	60	6	0.09
TL 26	Wing Collar	M30 x 3	45	60	6	0.08
TL 38	Wing Collar	M30 x 3.5	45	60	6	0.08
TL 27	Wing Collar	M36 x 3	60	88	10	0.26
TL 28	Wing Collar	M40 x 3	60	88	10	0.24

## TOP LINK LOCK NUT

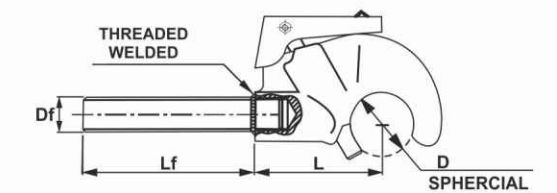
Code No.		Df	D	R	S	Weight Kg.
TL 29	Star Collar	M22 x 2.5	34	30	12	0.06
TL 30	Star Collar	M24 x 2.5	34	30	12	0.06
TL 35	Star Collar	M24 x 3	34	30	12	0.06
TL 31	Star Collar	M27 x 3	40	45	18	0.15
TL 32	Star Collar	M30 x 3	40	45	18	0.14
TL 36	Star Collar	M30 x 3.5	40	45	18	0.14
TL 33	Star Collar	M36 x 3	52	45	18	0.17
TL 34	Star Collar	M40 x 3	52	45	18	0.16



## TOP LINK HITCH

Threaded Top Link Automatic Hitch

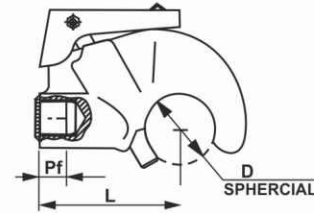
Code No.	Cat.	D	Df (DX-RHS)	Lf	L	Weight Kg.
TLH 10980	2	50	M27 x 3	180	105	2.74
TLH 10981	2	50	M30 x 3	180	105	2.96
TLH 10967	2	50	M30 x 3.5	180	105	2.96
TLH 10971	2	50	M36 x 3	180	105	3.40
TLH 10978	3/2	60	M30 x 3	180	132	5.36
TLH 10968	3/2	60	M30 x 3.5	180	132	5.36
TLH 10972	3/2	60	M36 x 3	180	132	5.78
TLH 10973	3/2	60	M40 x 3	180	132	6.08



## TOP LINK HITCH



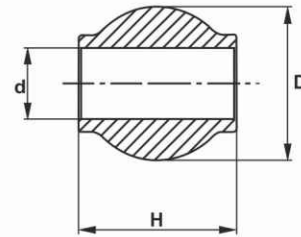
Weld on Top Link Automatic Hitch



Code No.	Cat.	D	L	Df (DX-RHS)	Pf	Weight Kg.
WTL 10975	2	50	105	BORE Ø12	15	2.02
WTL 10976	2	50	105	M20 x 1.5	25	1.96
WTL 10969	2	50	105	M27 x 2	25	2.10
WTL 10974	2	50	105	M30 x 2	25	2.30
WTL 10977	3/2	60	132	BORE Ø20	25	4.50
WTL 10979	3/2	60	132	M27 x 2	45	4.24
WTL 10970	3/2	60	132	M36 x 2	45	4.04

## TOP LINK BALL

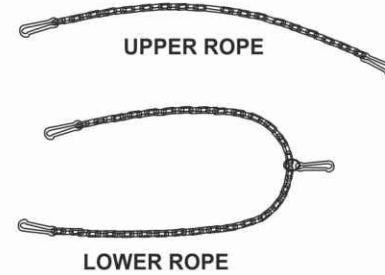
Ball for Upper Automatic Hitch



Code No.	Cat.	d (A12)	D	H (h11)	Weight Kg.
BH 10989	1	19	50	51	0.42
BH 10985	2	25.4	50	51	0.34
BH 10987	3/2	25.4	60	51	0.64
BH 10988	3	32	60	51	0.54

## CONTROL WIRE

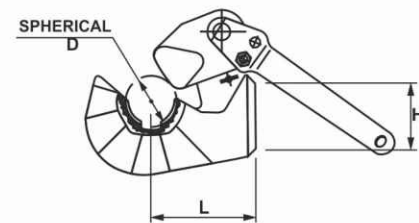
Control Wire for Upper and Lower Automatic Hitch



Code No.	Total Length mm.
CWU 10997	1500 - Upper
CWL 10996	4400 - Lower

## LOWER HITCH POINT

Code No.	Hitch	Cat.	D	Inner Ball Ø	L	H	Weight Kg.
LHP 10982	DX	2	56	28.4	108	80	4.56
LHP 10986	SX	2	56	28.4	108	80	4.56
LHP 10983	DX	3	64	37	120	90	6.10
LHP 10984	SX	3	64	37	120	90	6.10



## SPACER SPRING



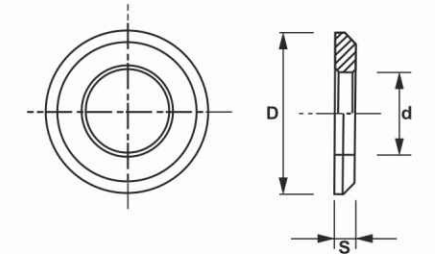
Adjustable Spacer-Spring for Lower Arm



Code No.	Cat.	Length		Type	Weight Kg.
		Min.	Max.		
AS 10965	2	500	720	A	1.90
AS 10966	3	600	900	B	2.38

## SPACING BALL

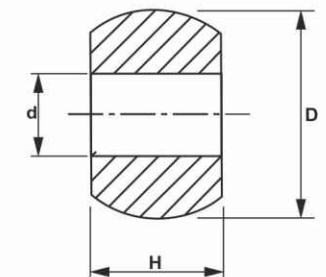
Spacing for Balls without Cones



Code No.	Cat.	d (A12)	D	S	Weight Kg.
SB 10955	2	28.4	56	7	0.10
SB 10956	3/2	28.4	64	7	0.13
SB 10957	3	37	64	7	0.10

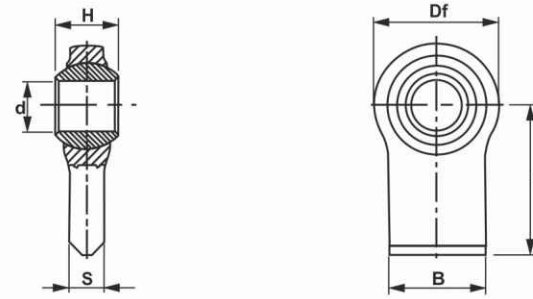
## LOWER BALL

Balls without Guidance Cones for Lower Hitch Point

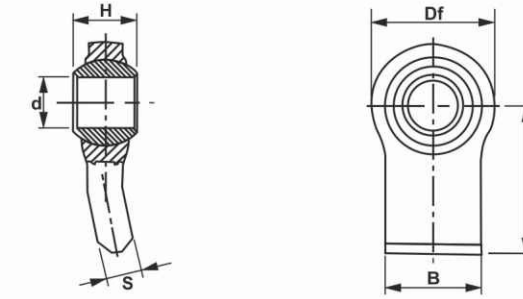


Code No.	Cat.	d (A12)	D	H (h11)	Weight Kg.
BGC 10999	2/1	22.1	56	45	0.80
BGC 10993	2	28.4	56	45	0.44
BGC 10994	3/2	28.4	64	45	0.72
BGC 10998	3	37	64	45	0.56
BGC 10995	---	38	64	45	0.56

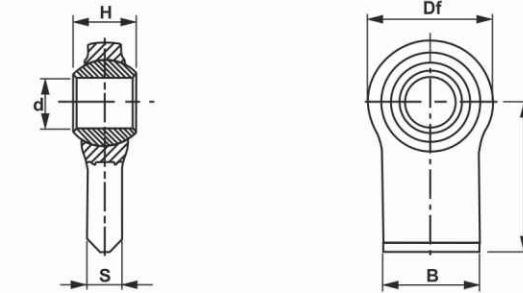




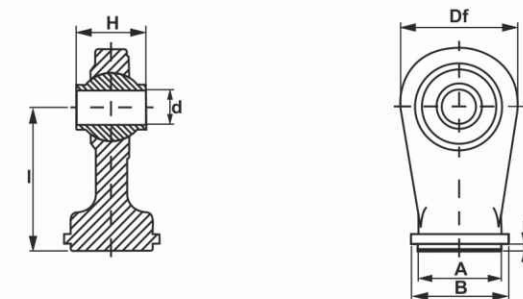
Code No.	Cat.	d (A12)	H (h11)	B	S	Dt	I	Type	Weight Kg.
BJR 10490	---		32	30	11	46	60	A	0.30
BJR 10495	---	16	20	30	11	46	60	A	0.27
BJR 10496	---	19	44	52	17	52	50	A	0.46
BJR 10494	---	18	35	50	15	65	43	A	0.58
BJR 10497	---	19	35	50	15	65	43	A	0.56
BJR 10498	1	22.1	35	50	15	65	43	A	0.54
BJR 10501	1	22.1	35	50	15	68	90	A	0.92
BJR 10503	1	22.1	35	55	15	66	70	A	0.70
BJR 10506	---	25.4	38	70	18	78	80	A	1.14
BJR 10507	2	28.4	38	70	18	78	80	A	1.10
BJR 10510	1	22.1	35	70	18	76	50	A	0.82
BJR 10515	---	25.4	35	70	18	76	50	A	0.78
BJR 10520	---	26	35	70	18	76	50	A	0.78
BJR 10530	2	28.4	35	70	18	76	50	A	0.76
BJR 10540	1	22.1	35	70	19	83	55	A	1.18
BJR 10550	---	25.4	35	70	19	83	55	A	1.16
BJR 10560	2	28.4	35	70	19	83	55	A	1.12
BJR 10562	2	28.4	45	70	19	83	55	A	1.16
BJR 10564	2	28.4	45	70	20	82	55	A	1.22
BJR 10566	---	25.4	38	70	23	80	80	A	1.56
BJR 10568	2	28.4	38	70	23	80	80	A	1.52
BJR 10575	2	28.4	45	70	23	80	80	A	1.54
BJR 10569	---	25.4	45	70	22	80	65	A	1.36
BJR 10570	2	28.4	45	70	22	80	65	A	1.32
BJR 10590	1/2	22.1/28.4	45	70	22	80	65	A	1.22
BJR 10579	2	28.4	45	76	17	90	82	A	1.48
BJR 10580	2	28.4	45	70	22	96	65	A	1.70
BJR 10597	---	32	45	70	22	96	65	A	1.66
BJR 10600	---	34	45	70	22	96	65	A	1.62
BJR 10602	---	35	45	70	22	96	65	A	1.60
BJR 10604	3	37	45	70	22	96	65	A	1.56
BJR 10610	---	38	45	80	24	108	65	A	1.96
BJR 10612	---	34	45	80	24	108	65	A	2.04
BJR 10614	3	37	45	80	24	108	65	A	1.98
BJR 10615	2	28.4	45	80	24	108	65	A	2.16
BJR 10616	---	35	45	80	24	108	65	A	2.00
BJR 10617	---	42	45	80	24	108	65	A	1.88
BJR 10636	2	28.4	45	94	30	94	86	A	2.58
BJR 10637	---	38	45	94	30	94	86	A	2.38



Code No.	Cat.	d (A12)	H (h11)	B	S	Dt	I	Type	Weight Kg.
BJR 10508	1	22.1	35	60	15	68	90	B	0.98
BJR 10585	2	28.4	45	70	21	83	110	B	1.84

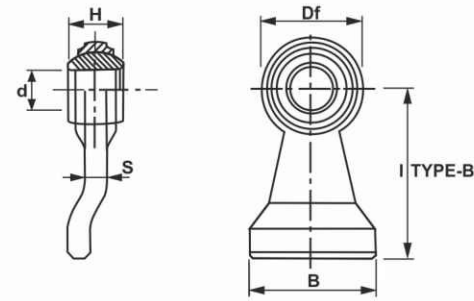
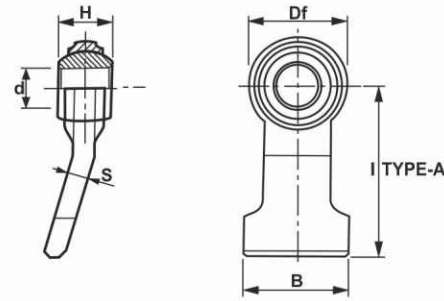


Code No.	Cat.	d (A12)	H (h11)	B	S	Dt	I	Weight Kg.
WB 10499	---	19	35	60	18	67	50	0.74
WB 10500	1	22.1	35	60	18	67	50	0.72
WB 10505	1	22.4	35	58	18	67	75	0.94
WB 10576	2	28.4	45	70	18	85	80	1.44
WB 10577	1/2	22.1/28.4	45	70	18	85	80	1.34
WB 10578	2	28.4	35	70	18	85	80	1.40

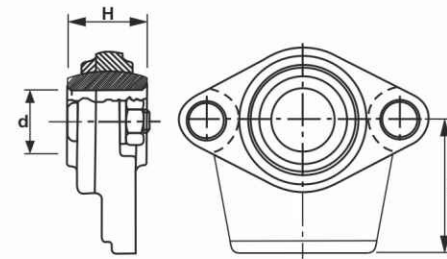


Code No.	d (A12)	H (h11)	AØ	BØ	C	Dt	I	NOTE	Weight Kg.
BJT 106025	25.4	51	60	70	5	85	105	Flat Base	2.25
BJT 106325	25.4	51	63	73	5	85	105	Flat Base	2.28
BJT 107025	25.4	51	70	80	5	85	105	Flat Base	2.36



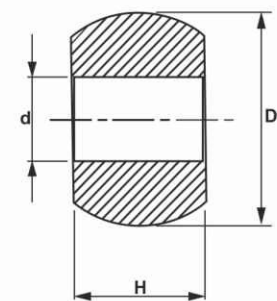


Code No.	Cat.	d (A12)	H (h11)	B	S	Dt	I	Weight Kg.	Type	Orig. Fiat Ref.
WB 10620	2	28.4	45	100	21	80	130	2.24	B	01930293
WB 10621	2	28.4	45	100	32	100	130	3.52	A	---
WB 10622	---	35	45	100	32	100	130	3.38	A	4997106
WB 10624	3	37	45	100	32	100	130	3.34	A	---

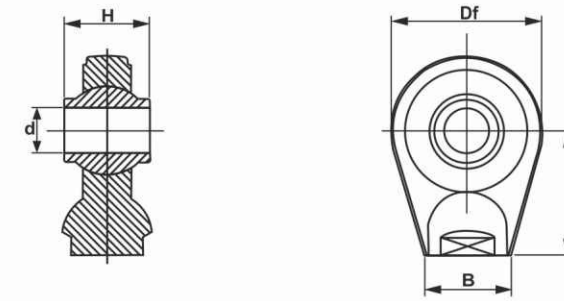


Code No.	Cat.	d (A12)	H (h11)	I	Weight Kg.
BEF 10680	1	22.1	35	55	1.40
BEF 10670	---	25.4	35	55	1.36
BEF 10690	2	28.4	35	55	1.32
BEF 10685	---	25.4	45	55	1.40
BEF 10689	2	28.4	45	55	1.36

**BALL SPACER PART**

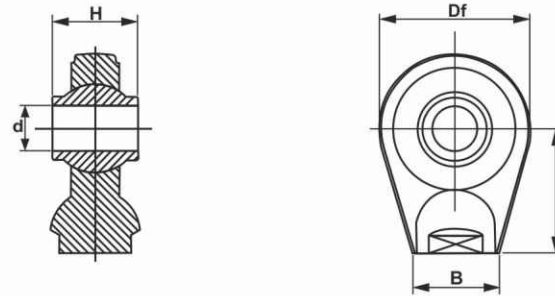


Code No.	Cat.	d (A12)	D	H (h11)	Application	Weight Kg.
BSP 10681	1	22.1	56	35	SR 10680	0.48
BSP 10682	---	25.4	56	45	SR 10685	0.48
BSP 10993	2	28.4	56	45	SR 10689	0.44
BSP 10691	2	28.4	56	35	SR 10690	0.40
BSP 10692	---	25.4	56	35	SR 10670	0.44

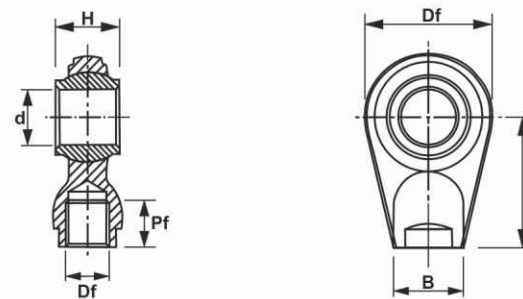


Code No.	Cat.	d (A12)	H (h11)	BØ	Dt	I	Df	Pf	Note	Weight Kg.
BJ 10705	-1-	19	44	30	62	50	---	---	Flat Base	0.54
BJ 10707	---	22.1	44	34	62	58	---	---	Flat Base	0.58
BJ 10708	1	19	44	34	62	58	---	---	Flat Base	0.60
BJ 10709	---	20	44	34	62	58	---	---	Flat Base	0.59
BJ 10710	1	19	44	34	62	60	---	---	Flat Base	0.62
BJ 10712	---	22.1	44	34	62	60	---	---	Flat Base	0.60
BJ 10720	---	20	44	34	62	60	---	---	Flat Base	0.61
BJ 10724	1	19	35	26	62	50	---	---	Flat Base	0.54
BJ 10725	---	22.1	35	26	62	50	---	---	Flat Base	0.52
BJ 10727	1	19	35	30	70	46	---	---	Flat Base	0.64
BJ 10730	---	22.1	51	38	75	65	---	---	Flat Base	0.98
BJ 10735	2	25.4	40	38	75	65	---	---	Flat Base	0.90
BJ 10737	1	19	51	38	75	65	---	---	Flat Base	1.02
BJ 10739	---	30	51	38	75	65	---	---	Flat Base	0.88
BJ 10740	2	25.4	51	38	75	65	---	---	Flat Base	0.94
BJ 10741	2	25.4	51	31	75	70	---	---	Flat Base	0.90
BJ 10742	2	25.4	51	45	72	70	---	---	Flat Base	1.14
BJ 10744	1	19	51	45	72	70	---	---	Flat Base	1.22
BJ 10746	---	22.1	51	45	72	70	---	---	Flat Base	1.18
BJ 10748	---	30	51	45	72	70	---	---	Flat Base	1.08
BJ 10756	---	22.1	51	50	85	70	---	---	Flat Base	1.64
BJ 10759	1	19	51	50	85	70	---	---	Flat Base	1.68
BJ 10760	2	25.4	51	50	85	70	---	---	Flat Base	1.62
BJ 10780	---	30	51	50	85	70	---	---	Flat Base	1.56
BJ 10791	2	25.4	51	40	90	85	---	---	Flat Base	1.68
BJ 10792	---	30	51	40	90	85	---	---	Flat Base	1.64
BJ 10793	3	32	51	40	90	85	---	---	Flat Base	1.58
BJ 10795	---	35	55	40	90	85	---	---	Flat Base	1.52
BJ 10796	1/2	19/25.4	45 x 45	40	90	85	---	---	Flat Base	1.56
BJ 10750	2	25.4	51	50	83	65	---	---	Flat Base	1.38
BJ 10800	---	29	55	50	83	65	---	---	Flat Base	1.38
BJ 10805	---	30	42	50	83	65	---	---	Flat Base	1.30
BJ 10807	3	32	51	50	83	65	---	---	Flat Base	1.30
BJ 10810	---	30	55	50	83	65	---	---	Flat Base	1.36
BJ 10812	---	35	35	50	83	65	---	---	Flat Base	1.20
BJ 10815	---	35	55	50	83	65	---	---	Flat Base	1.24
BJ 10816	---	29	55	50	92	65	---	---	Flat Base	1.60
BJ 10817	---	30	55	50	92	65	---	---	Flat Base	1.58
BJ 10818	---	30	42	50	92	65	---	---	Flat Base	1.52
BJ 10825	3	32	51	50	92	65	---	---	Flat Base	1.54
BJ 10819	---	35	35	50	92	65	---	---	Flat Base	1.42
BJ 10821	---	40	75	58	108	60	---	---	Flat Base	2.76
BJ 10841	---	45	75	58	108	60	---	---	Flat Base	2.56
BJ 10861	---	50	75	58	108	60	---	---	Flat Base	2.36
BJ 10820	---	40	75	60	108	85	---	---	Flat Base	3.42
BJ 10840	---	45	75	60	108	85	---	---	Flat Base	3.22
BJ 10860	---	50	75	60	108	85	---	---	Flat Base	3.02

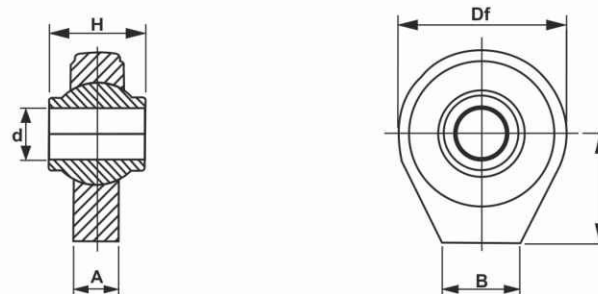




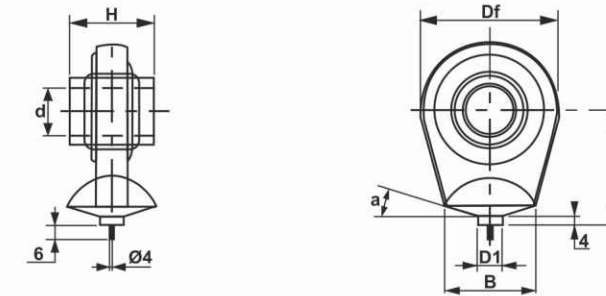
Code No.	Cat.	d (A12)	H (h11)	BØ	Dt	I	Df	Pf	Note	Weight Kg.
BJR 10693	---	14	44	25	55	50	---	---	Rough Base	0.46
BJR 10694	1	19	30	25	55	50	---	---	Rough Base	0.40
BJR 10695	1	19	44	25	55	50	---	---	Rough Base	0.42
BJR 10696	---	20	44	25	55	50	---	---	Rough Base	0.41
BJR 10697	1	19	44	26	55	65	---	---	Rough Base	0.50



Code No.	Cat.	d (A12)	H (h11)	BØ	Dt	I	Df	Pf	Note	Weight Kg.
BJR 10768	---	22.1	51	50	85	70	M27 x 2	27	Flat Base	1.50
BJR 10769	1	19	51	50	85	70	M27 x 2	27	Flat Base	1.54
BJR 10770	2	25.4	51	50	85	70	M27 x 2	27	Flat Base	1.46
BJR 10790	---	30	51	50	85	70	M27 x 2	27	Flat Base	1.40
BJR 10794	3	32	51	40	90	85	M27 x 2	27	Flat Base	1.44
BJR 10830	---	40	75	60	108	85	M38 x 2	28	Flat Base	3.90
BJR 10850	---	45	75	60	108	85	M38 x 2	28	Flat Base	2.90
BJR 10870	---	50	75	60	108	85	M38 x 2	28	Flat Base	2.70



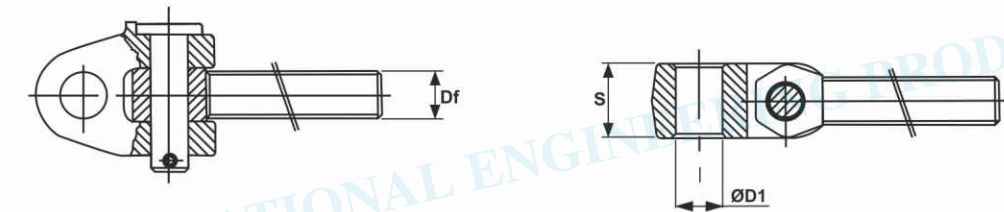
Code No.	Cat.	d (A12)	H (h11)	BØ	Dt	I	Df	Pf	Note	Weight Kg.
BJR 10700	1	19	44	30 x 13	62	34	---	---	Rough Base	0.44
BJR 10702	---	20	44	30 x 13	62	34	---	---	Rough Base	0.43
BJR 10704	---	22.1	44	30 x 13	62	34	---	---	Rough Base	0.42



Code No.	Cat.	d (A12)	H (h11)	BØ	Dt	I	Df	Degree a	Weight Kg.
BJR 10731	1	19	51	35	75	55	12	15	0.88
BJR 10732	---	22.1	51	35	75	55	12	15	0.87
BJR 10736	2	25.4	51	35	75	55	12	15	0.84
BJR 10733	---	28.4	51	35	75	55	12	15	0.82
BJR 10738	---	30	51	35	75	55	12	15	0.78
BJR 10808	---	30	55	45	83	65	20	20	1.50
BJR 10811	3	32	51	45	83	65	20	20	1.40
BJR 10814	---	35	55	45	83	65	20	20	1.42

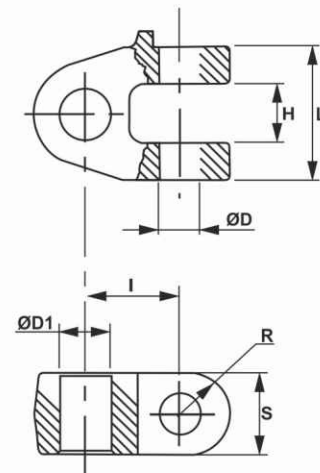
### YOKE 3" POINT LINKAGE

Articulated Yoke for 3" Point Linkage



Code No.	Cat.	Df	ØD1	S	Code No.	Cat.	Df	ØD1	S
AY 1400	2	M30 x 3 DX	25.4	51	AY 1428	2	M30 x 3.5 DX	25.4	51
AY 1402	2	M30 x 3 SX	25.4	51	AY 1430	2	M30 x 3.5 SX	25.4	51
AY 1404	---	M30 x 3 DX	28	51	AY 1432	---	M36 x 3 DX	20	51
AY 1406	---	M30 x 3 SX	28	51	AY 1434	---	M36 x 3 SX	20	51
AY 1408	---	M30 x 3 DX	30	51	AY 1436	---	M36 x 3 DX	22.1	51
AY 1410	---	M30 x 3 SX	30	51	AY 1438	---	M36 x 3 SX	22.1	51
AY 1412	3	M30 x 3 DX	32	51	AY 1440	2	M36 x 3 DX	25.4	51
AY 1414	3	M30 x 3 SX	32	51	AY 1442	2	M36 x 3 SX	25.4	51
AY 1416	1	M30 x 3.5 DX	19	51	AY 1444	---	M36 x 3 DX	28	51
AY 1418	1	M30 x 3.5 SX	19	51	AY 1446	---	M36 x 3 SX	28	51
AY 1420	---	M30 x 3.5 DX	20	51	AY 1448	---	M36 x 3 DX	30	51
AY 1422	---	M30 x 3.5 SX	20	51	AY 1450	---	M36 x 3 SX	30	51
AY 1424	---	M30 x 3.5 DX	22.1	51	AY 1452	3	M36 x 3 DX	32	51
AY 1426	---	M30 x 3.5 SX	22.1	51	AY 1454	3	M36 x 3 SX	32	51

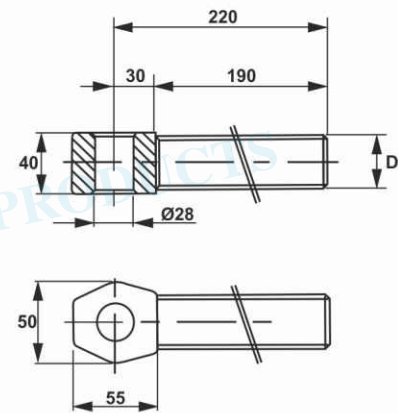




Code No.	ØD	ØD1	I	H	L	S	R	Weight Kg.
SR 1460	28	19	63	40	85	51	25.5	1.94
SR 1461	28	20	63	40	85	51	25.5	1.96
SR 1462	28	22.1	63	40	85	51	25.5	1.92
SR 1463	28	25.4	63	40	85	51	25.5	1.88
SR 1464	28	28	63	40	85	51	25.5	1.84
SR 1465	28	30	63	40	85	51	25.5	1.78
SR 1466	28	32	63	40	85	51	25.5	1.74
SR 1467	28	36	63	40	85	51	25.5	1.66
SR 1470	28	28	57	40	75	65	28	1.46

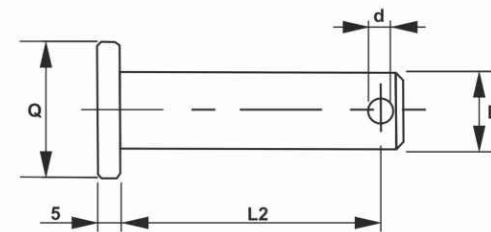
## THREADED END

Threaded End Assemblies for Shifter



Code No.	Df	Weight Kg.
SR 1480	M30 x 3 DX	1.42
SR 1482	M30 x 3 SX	1.42
SR 1484	M30 x 3.5 DX	1.40
SR 1486	M30 x 3.5 SX	1.40
SR 1488	M36 x 3 DX	1.84
SR 1490	M36 x 3 SX	1.84
SR 1500	Ø36 Non Turned	2.00

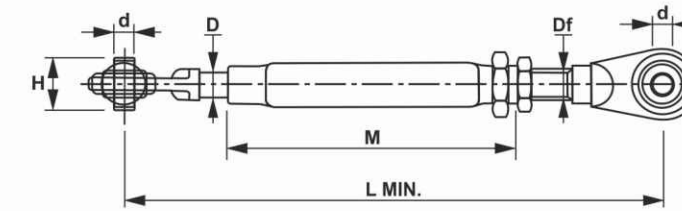
## PIN



Code No.	D	Q	L2	d	Weight Kg.
P 11194	28	34 x 34	80	6	0.60
P 11195	28	34 x 34	90	6	0.60



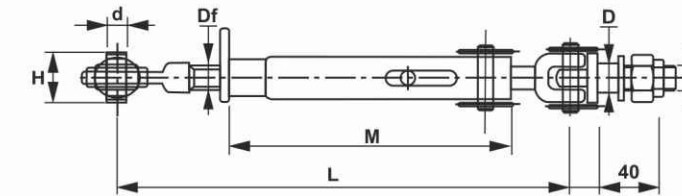
Rigid Stabilizers for Tractor Renault



Code No.	L. Min.	M	Df	D (A12)	H (h11)	D	End Assembly		Weight Kg.
							DX (RHS)	SX (LHX)	
ST 12042	570	465	M24 x 3	22.1	35	18.5	TF 10331	TF 10332	3.64
ST 12046	690	485	M24 x 3	22.1	35	18.5	TF 10331	TF 10332	4.12
ST 12047	655	525	M27 x 3	28.4	45	22	TF 10351	TF 10352	5.52

## RIGID STABILIZER

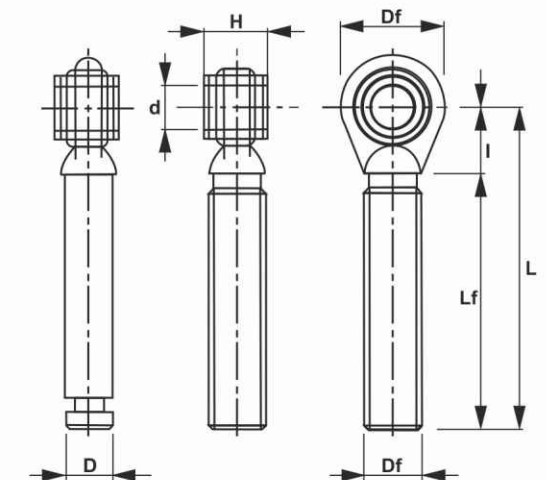
Rigid Stabilizers for Tractor



Code No.	L		M	Df	D (A12)	H (h11)	D	F	Note	Weight Kg.
	Min.	Max.								
ST 12000	470	620	355	M27 x 3	19	44	20	M20 x 2.5	No Eyelet	4.76
ST 12010	440	600	315	M27 x 3	19	44	28	M24 x 2	With Eyelet	4.80
ST 12020	440	600	315	M27 x 3	25.4	51	28	M24 x 2	With Eyelet	5.26
ST 12030	510	670	395	M27 x 3	19	44	28	M24 x 2	With Eyelet	4.86
ST 12040	510	670	395	M27 x 3	25.4	51	28	M24 x 2	With Eyelet	5.32

## END ASSEMBLIES

End Assemblies for Stabilizers Renault



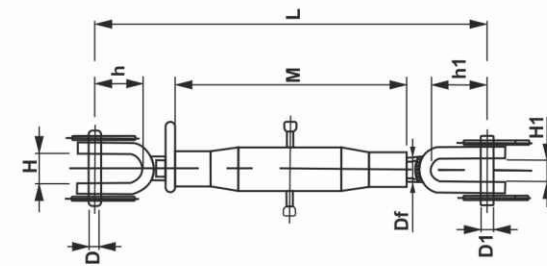
Code No.	d (A12)	H (h11)	Df	D	L	Lf	I	Dt	Weight Kg.
ES 10331	22.1	35	M24 x 3 DX	---	175	130	45	64	0.98
ES 10351	28.4	45	M27 x 3 DX	---	240	180	60	80	1.82
ES 10332	22.1	35	Turned Rod	18.5	220	---	45	64	0.96
ES 10352	28.4	45	Turned Rod	22	240	---	60	80	1.66



# LEVELING ARM



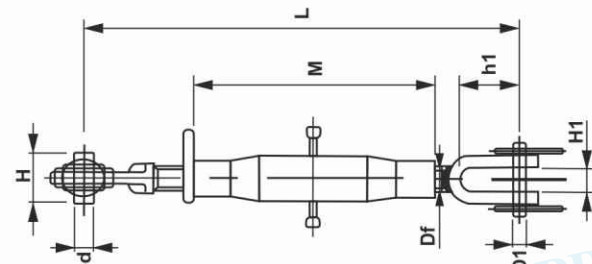
Adjustable Leveling Arm



Code No.	L		M	Df	D	D1	H	h	H1	h1	Weight Kg.
	Min.	Max.									
AL 11900	380	520	230	M22 x 2.5	18	18	30	37	24	72	2.74
AL 11905	400	480	230	M22 x 2.5	18	26	30	37	24	93	3.24
AL 11910	440	600	260	M24 x 2.5	18	18	40	70	24	72	3.42
AL 11915	530	690	370	M24 x 2.5	18	22	30	37	24	72	4.00
AL 11920	500	690	320	M27 x 3	18	18	40	70	24	72	3.54

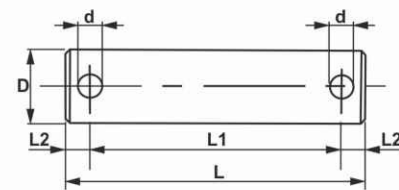
## LEVELING ARM

Adjustable Leveling Arm With Ball End



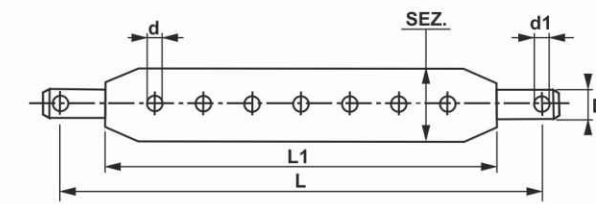
Code No.	L		M	Df	D (A12)	D1	H (h11)	H1	h1	Weight Kg.
	Min.	Max.								
AL 11930	380	530	225	M24 x 3	19	18	44	24	72	2.74
AL 11931	380	530	225	M24 x 3	22.1	18	35	24	72	2.84
AL 11940	420	570	275	M24 x 3	19	18	44	24	72	2.84
AL 11941	420	570	275	M24 x 3	22.1	18	35	24	72	2.94
AL 11943	510	660	360	M24 x 3	19	18	44	24	72	3.12
AL 11947	580	730	430	M24 x 3	22.1	18	35	24	72	3.26

## LINKAGE PIN



Code No.	D	L	L1	L2	d	Weight Kg.
LP 11921	18	64	52	6	6	0.12
LP 11922	18	74	62	6	6	0.14
LP 11923	18	84	72	6	6	0.16
LP 11924	18	94	82	6	6	0.18

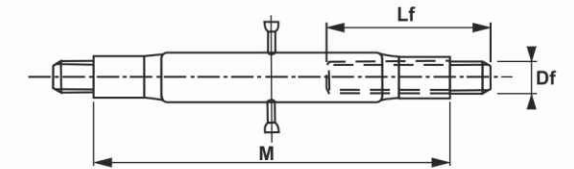
# DRAWBAR



Code No.	Cat.	D	Sez.	L (+2.5)	L (+1.5)	d	N. Note	d1	Weight Kg.
DB 11850	1	22	70 x 25	770	680	22	7	11	8.64
DB 11860	2	28	80 x 30	890	780	28	7	11	12.86

## ADJUSTERS

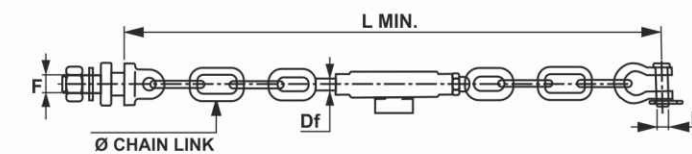
Adjustable Leveling Arm With Ball End



Code No.	Df	M	L1	Weight Kg.
AD 11861	M22 x 2.5	230	110	1.46
AD 11862	M22 x 2.5	280	110	1.66
AD 11863	M24 x 2.5	320	130	2.00
AD 11864	M27 x 3	320	160	2.42
AD 11865	M30 x 3	360	160	3.08
AD 11866	M30 x 3	430	160	3.36
AD 11867	M36 x 3	460	160	4.98

## SLING CHAIN

Sling Chains for Lifts



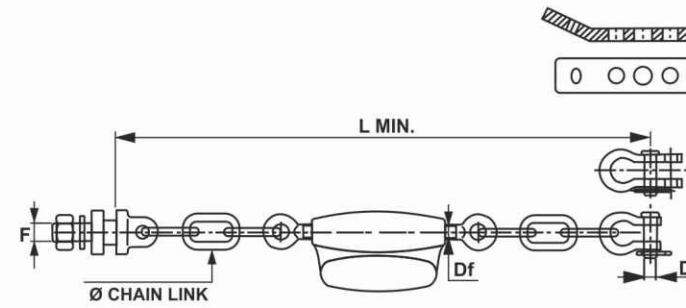
Code No.	N. Chian Link	Ø Chain Link	L Min.	D	Df	F	Tractor Type	Weight Kg.
SC 12100	1 + 1	12	440	14	M20 x 2.5	M20	Same	2.00
SC 12110	2 + 2	12	570	14	M20 x 2.5	M20	Same	2.28
SC 12120	3 + 3	12	690	14	M20 x 2.5	M20	Same	2.60
SC 12130	3 + 2	12	620	14	M20 x 2.5	M20	Same	2.44
SC 12140	3 + 1	10	460	14	M20 x 2.5	M18	Same	1.56
SC 12142	2 + 1	14	500	16	M20 x 2.5	M24	Same Explorer	3.00
SC 12150	3 + 2	12	620	14	M20 x 2.5	M20	Landini (with Plate)	3.10
SC 12160	2 + 2	12	570	14	M20 x 2.5	M20	Landini (with Plate)	2.92



# SLING CHAIN

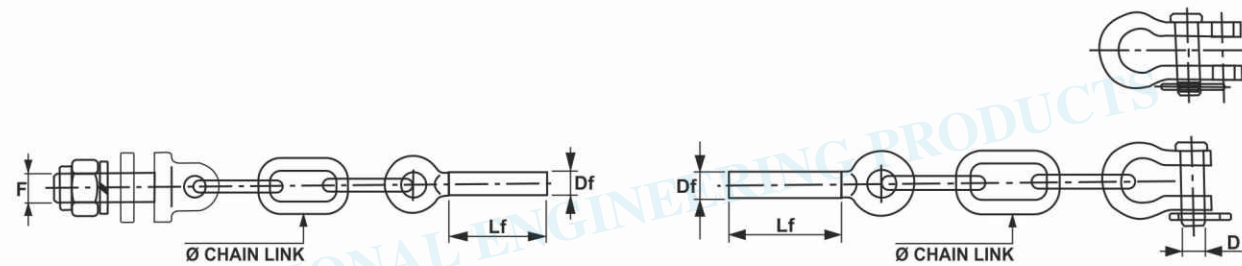


Sling Chains for Lifts



Code No.	N. Chian Link	Ø Chain Link	L Min.	D	Df	F	Tractor Type	Original Flat Ref.	Weight Kg.
SC 12049	1 + 1	14	430	14-14	M16 x 2	M22	Flat	5130634	2.80
SC 12050	1 + 1	12	370	14-14	M16 x 2	M22	Flat	5131390	2.58
SC 12060	2 + 1	12	450	14-14	M16 x 2	M22	Flat	5116366	2.76
SC 120170	2 + 2	12	430	12	M16 x 2	M18	Flat	5002501	2.50
SC 120180	3 + 3	12	490	12	M16 x 2	M18	Flat	5002499	2.70
SC 120190	4 + 4	12	570	12	M16 x 2	M18	Flat	5002545	3.00
SC 120194	4 + 3	18	670	16	M22 x 2.5	M20	Flat 805	4988796	5.18

## FLAT CHAIN

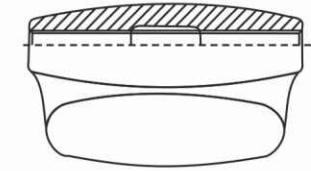


Code No.	N. Chian Link	Ø Chain Link	D	Df	Lf	F	Chain	Original Flat Ref.	Weight Kg.
FC 12251	3	12	---	M16 x 2 SX	75	M18 x 1.5	CS 12180	595165	1.10
FC 12261	3	12	12	M16 x 2 DX	75	---	CS 12180	571441	0.70
FC 12253	2	12	---	M16 x 2 SX	95	M22 x 1.5	CS 12060	5116090	1.16
FC 12263	1	12	14-14	M16 x 2 DX	95	---	CS 12060	5112029	0.70
FC 12255	1	12	---	M16 x 2 SX	75	M22 x 1.5	CS 12050	5131403	1.00
FC 12265	1	12	14-14	M16 x 2 DX	75	---	CS 12050	5131402	0.68
FC 12257	1	14	---	M16 x 2 SX	75	M22 x 1.5	CS 12049	5130652	1.12
FC 12267	1	14	14-14	M16 x 2 DX	75	---	CS 12049	5121161	0.78
FC 12258	2	12	---	M16 x 2 SX	75	M18 x 1.5	CS 12170	4969215	1.00
FC 12268	2	12	12	M16 x 2 DX	75	---	CS 12170	4969214	0.60
FC 12259	4	12	---	M16 x 2 SX	75	M18 x 1.5	CS 12190	505048	1.28
FC 12269	4	12	12	M16 x 2 DX	75	---	CS 12190	4988445	0.86

# CAST IRON TUBE



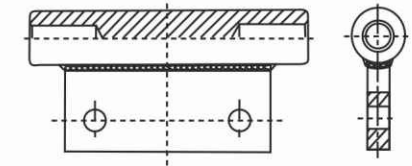
Cast Iron Tube for Fiat Chains



Code No.	Chain Application	Weight Kg.
CIT 12271	CS 12049 - CS 12050 - CS 12060 - CS 12170 CS 12180 - CS 12190	0.90

## MOUNTING PIN

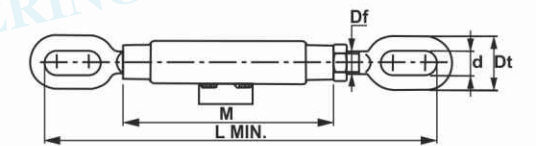
Housing for The Implement Mounting Pin for Tools Chains



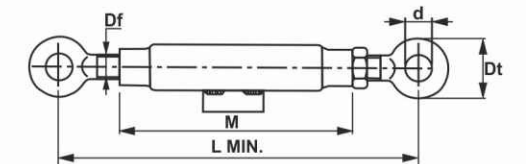
Code No.	Chain Application	Weight Kg.
MP 12275	Flat C 455 - Flat C 505 - Flat C 605	1.34

## ADJUSTABLE

Adjustable for Stabilizer



Code No.	Df	L Min.	M	Dt	d	Weight Kg.
AS 11590	M14 x 2	230	130	32	12	0.76
AS 11600	M16 x 2	230	130	35	15	0.78
AS 11610	M18 x 2.5	235	130	38	15	0.96
AS 11620	M20 x 2.5	270	130	36	14	1.10
AS 11630	M22 x 2.5	280	150	38	14	1.26



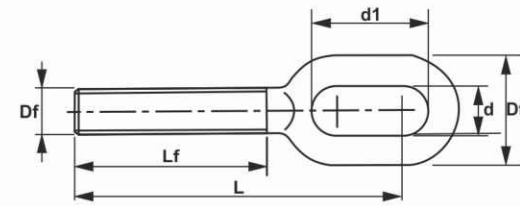
Code No.	Df	L Min.	M	Dt	d	Weight Kg.
AS 11615	M16 x 2	200	130	46	18	0.88
AS 11625	M20 x 2.5	230	130	44	18	1.14
AS 11635	M22 x 2.5	230	150	50	20	1.36



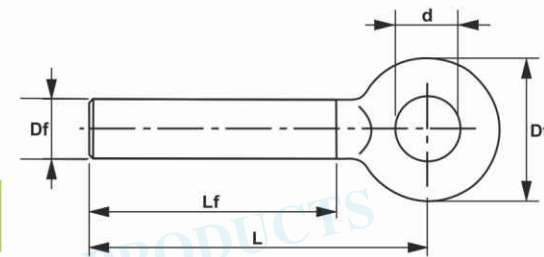
# STABILIZER END



Round and Eyelet Head Shaped for Huffs

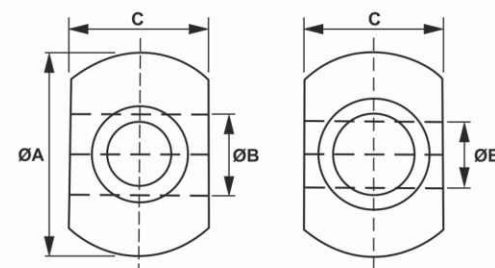


Code No.	Df	L	Lf	d	d1	Dt	Weight Kg.
RES 12370	M14 x 2 DX	109	65	12	30	32	0.14
RES 12371	M14 x 2 SX	109	65	12	30	32	0.14
RES 12372	M16 x 2 DX	107	70	15	30	35	0.17
RES 12373	M16 x 2 SX	107	70	15	30	35	0.17
RES 12374	M18 x 2.5 DX	110	70	15	30	38	0.23
RES 12375	M18 x 2.5 SX	110	70	15	30	38	0.23
RES 12376	M20 x 2.5 DX	126	75	14	43	36	0.28
RES 12377	M20 x 2.5 SX	126	75	14	43	36	0.28
RES 12378	M22 x 2.5 DX	130	80	14	43	38	0.34
RES 12379	M22 x 2.5 SX	130	80	14	43	38	0.34



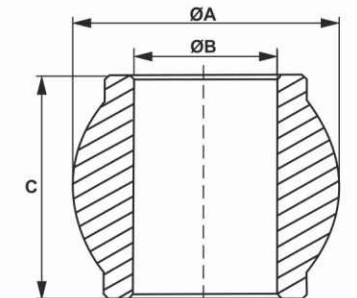
Code No.	Df	L	Lf	d	Dt	Weight Kg.
RES 12372	M16 x 2 DX	98	70	18	46	0.22
RES 12373	M16 x 2 SX	98	70	18	46	0.22
RES 12376	M20 x 2.5 DX	115	85	18	44	0.30
RES 12377	M20 x 2.5 SX	115	85	18	44	0.30
RES 12378	M22 x 2.5 DX	115	85	20	50	0.36
RES 12379	M22 x 2.5 SX	115	85	20	50	0.36

## BALL DOUBLE BORE



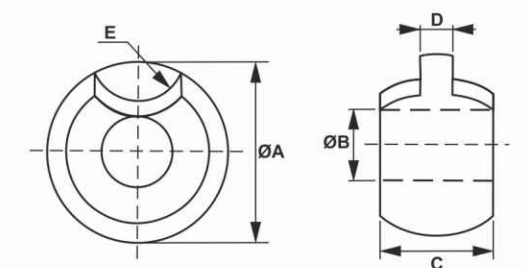
Code No.	A	B	C
BDB 2228	56	22.1 28.7	44.5

# TOP LINK BALLS



Code No.	A	B	C
TLB 321625	32	16	25.4
TLB 381525	38	15.9	25.4
TLB 381941	38	19	41
TLB 381944	38	19	44
TLB 382044	38	20	44
TLB 461944	46	19	44
TLB 462044	46	20	44
TLB 462541	46	25.4	41
TLB 462544	46	25.4	44
TLB 462545	46	25.4	45
TLB 462551	46	25.4	51
TLB 502251	50	22.1	51
TLB 502544	50	25.4	44
TLB 502551	50	25.4	51
TLB 511944	50.8	19	44
TLB 512544	50.8	25.4	44.5
TLB 512844	50.8	28.4	44.5
TLB 542551	54	25.4	51
TLB 543055	54	30	55
TLB 543251	54	32	51
TLB 543555	54	35	55
TLB 602551	60	25.4	51
TLB 603151	60	31.7	51
TLB 602550	60	25.4	50
TLB 603250	60	32.5	50

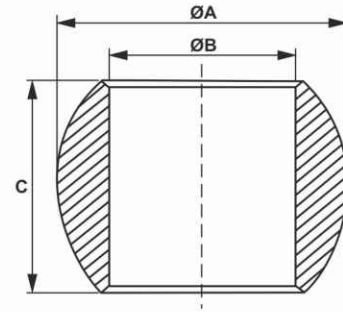
## BALL WITH CUT



Code No.	A	B	C	D	E
BWC 22	56.5	22	35	10	R35
BWC 28	56.5	28.6	44.5	10	R35

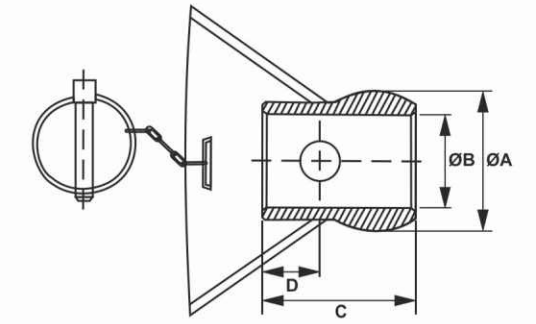


# LOWER LINK BALL



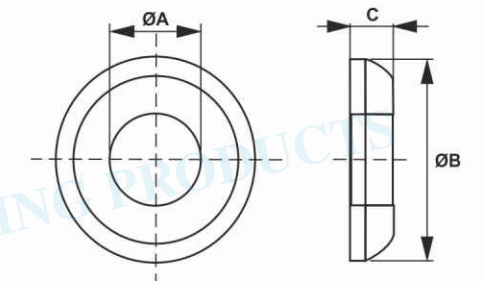
Code No.	A	B	C
LLB 441935	44.5	19	35
LLB 442235	44	22.1	35
LLB 452235	44.5	22.1	35
LLB 462833	46	28.4	33.5
LLB 482235	48	22.1	35
LLB 482535	48	25.4	35
LLB 502540	50	25.4	40
LLB 502940	50	29	40
LLB 503825	50.8	38	25
LLB 543555	54	35	55
LLB 562235	56	22.1	35
LLB 562245	56	22.1	45
LLB 562535	56	25.4	35
LLB 562835	56	28.4	35
LLB 562838	56	28.4	38
LLB 562845	56	28.4	45
LLB 562945	56	28.6	45
LLB 572945	56.5	28.6	45
LLB 572845	56.8	28.4	44.8
LLB 572235	57	22.1	35
LLB 572535	57	25.4	35
LLB 572538	57	25.4	38
LLB 572835	57	28.4	35
LLB 572838	57	28.4	38
LLB 572842	57	28.4	42
LLB 572844	57	28.4	44.5
LLB 602551	60	25.4	51
LLB 622845	62.5	28.6	45
LLB 623745	62.5	37	45
LLB 633745	63.5	37	45
LLB 642245	64	22	45
LLB 642845	64	28.4	45
LLB 643845	64	38	45
LLB 643045	64	30.5	45
LLB 643245	64	32.5	45
LLB 643545	64	35.5	45
LLB 643745	64	37.5	45

# GUIDE CONE BALL



Code No.	A	B	C	D
GCB 5628	56	28.4	68	20
GCB 5637	56	37.6	68	20
GCB 6428	64	28.4	72	20
GCB 6432	64	32.5	72	20
GCB 6437	64	37	72	20

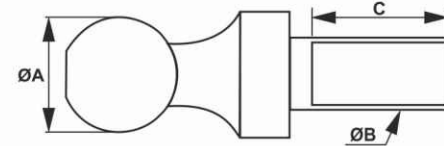
# SPACERS



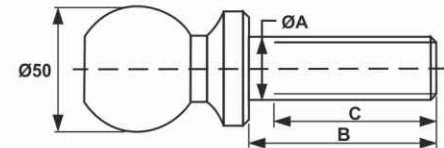
Code No.	A	B	C
SR 2856	28	56	7
SR 2864	28	64	7
SR 3864	38	64	7



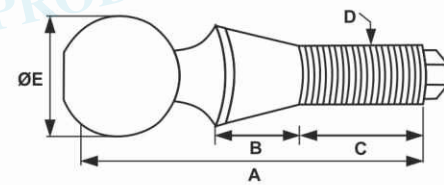
# HITCH BALLS



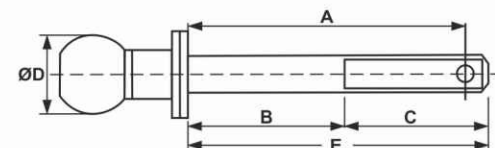
Code No.	Max. Load	ØA Inch	Thread ØB Inch	Length C Inch
HB 54-01	2000	1-7/8	3/4	1-3/4
HB 54-02	3500	2	3/4	1-3/4
HB 54-03	5000	2	1	2-1/8
HB 54-04	7500	2-5/16	1-1/4	2-1/8



Code No.	ØA	B	C
HB 54-08	19	70	57
HB 54-09	22	70	57
HB 54-10	25.4	70	57



Code No.	Dim. A mm	Dim. B mm	Dim. C mm	Thread D mm	ØE mm
HB 54-05	210.3	50.8	76.2	1.1/2-12 UNF	58.73

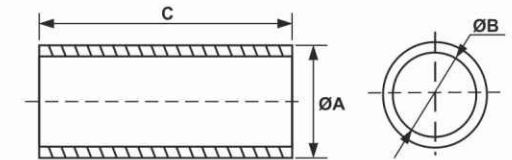


Code No.	Dim. A mm	Dim. B mm	Dim. C mm	ØD mm	Dim. E mm	Thread Size
HB 54-06	162	100	90	50	190	7/8"
HB 54-07	162	100	90	50	190	1"

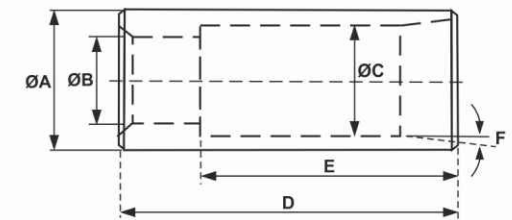
# REPLACEMENT BUSHES



Code No.	ØA mm	ØB mm	C mm
RB 191641	19	16	41
RB 221635	22	16	35
RB 251941	25.4	16	41
RB 251951	25.4	16	50.8
RB 282245	28.4	22.2	44.5
RB 282263	28.4	22.2	63
RB 282235	28.6	22.2	35
RB 282244	28.6	22.2	44
RB 282251	28.6	22.2	50.8
RB 322551	32	25.4	50.8
RB 362845	36.5	28.6	44.5



# TINE BUSHES

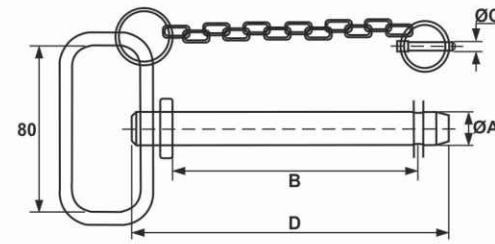


Code No.	Outer ØA mm	Inner ØB mm	Inner ØC mm	Length D mm	Depth E mm	Angle F Ship	Weight Kg.
TB 024	38	25.4	31	95	74	4°30'	0.3
TB 008	40	23	25	105	78	5°	0.45
TB 006	41	24	32	110	79	5°	0.51
TB 007	41	24	32	110	79	5°	0.6
TB 003	41	25.4	30	108	80	5°30'	0.5
TB 018	45	25	0	110	0	5°	0.765
TB 010	50	23	29	110	85	6°	1.8
TB 009	50	25	29	110	85	6°	1.08
TB 016	50	28	0	105	0	10°	1.05
TB 004	50	30	36	108	80	5°30'	0.76
TB 011	50	30	39	110	84	6°	1.63
TB 025	51	25	32	110	109	5°30'	1.085
TB 005	51	30	38	110	86	5°	0.755
TB 012	55	32	0	120	0	4°30'	1.24
TB 002	57	12.59	40	120	105	5°30'	0
TB 047	33	0	14	63	46	3°	0.292
TB 048	33	0	16.5	63	48	1.5°	0.281
TB 049	33	0	16.5	63	48	1.5°	0.263
TB 050	33	0	16.5	63	48	1.5°	0.281
TB 051	33	0	16.5	63	48	1.5°	0.256
TB 052	45	22	28	97	75	5°	1.27
TB 053	50	32	39	110	84	5.5°	1.02
TB 054	60	32	39	110	84	5.5°	1.8

# HITCH PIN

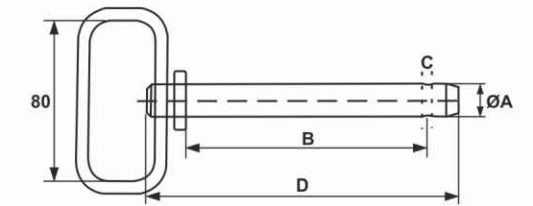


Hitch Pin with Chain & Linch Pin



Code No.	A	B	C	D
HPCLP 12093	12.7	92.5	6.5	127
HPCLP 12111	12.7	111	6.5	146
HPCLP 16103	15.9	103	6.5	136
HPCLP 16111	15.9	111	6.5	146
HPCLP 16165	15.9	165	6.5	200
HPCLP 19102	19	102	6.5	140
HPCLP 19110	19	110	6.5	147
HPCLP 19111	19	111	8.5	148
HPCLP 19115	19	115	12	153
HPCLP 19164	19	165	8.5	200
HPCLP 19165	19	165	6.5	204
HPCLP 19166	19	165	8.5	204
HPCLP 22115	22	115	6.5	153
HPCLP 22128	22	128	6.5	168
HPCLP 22164	22	165	6.5	200
HPCLP 22165	22	165	10	204
HPCLP 25165	25	165	10	204
HPCLP 25166	25	165	6.5	204
HPCLP 25189	25	189	12	227
HPCLP 28100	28	100	12	138
HPCLP 28120	28	120	10	158
HPCLP 28156	28	156	12	196
HPCLP 28165	28	165	6.5	204
HPCLP 28190	28	190	6.5	228
HPCLP 28189	28	189	12	228
HPCLP 30183	30	183	12	220
HPCLP 32162	32	162	6.5	204
HPCLP 32189	32	189	12	227
HPCLP 32165	32	165	10	204
HPCLP 32191	32	191	6.5	228
HPCLP 35189	35	189	12	227
HPCLP 38187	38	187	12	227

# HITCH PIN



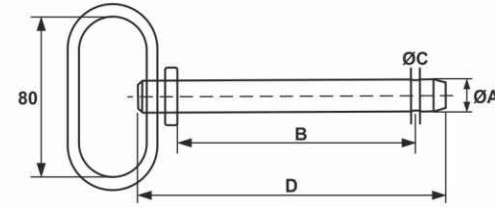
Code No.	A	B	C	D
HP 12089	12.7	89	4	127
HP 12102	12.7	102	4	136
HP 12108	12.7	108	5	144
HP 12114	12.7	114	5	150
HP 16089	15.9	89	5	127
HP 16102	15.9	102	5	136
HP 16108	15.9	108	5	144
HP 16114	15.9	114	5	150
HP 16127	15.9	127	6	165
HP 16152	19	152	6	192
HP 19102	19	102	8	136
HP 19108	19	108	8	144
HP 19114	19	114	8	150
HP 19127	19	127	8	165
HP 19140	19	140	8	178
HP 19152	19	152	8	190
HP 19158	22	158	8	196
HP 22108	22	108	10	144
HP 22114	22	114	10	150
HP 22127	22	127	10	165
HP 22152	22	152	10	190
HP 22158	22	158	10	198
HP 22165	22	165	10	204
HP 25108	25.4	108	10	144
HP 25114	25.4	114	10	150
HP 25152	25.4	152	10	190
HP 25158	25.4	158	10	204
HP 25165	25.4	165	10	228
HP 25190	25.4	190	10	150
HP 28114	28	114	12	190
HP 28152	28	152	12	198
HP 28158	28	158	12	198
HP 28165	28	165	12	204
HP 28190	28	190	12	228
HP 32152	32	152	12	190
HP 32158	32	158	12	198
HP 32165	32	165	12	204
HP 32190	32	190	12	230
HP 35190	32	190	12	230
HP 38190	32	190	12	230



# HITCH PIN



Hitch Pin with Hair Pin

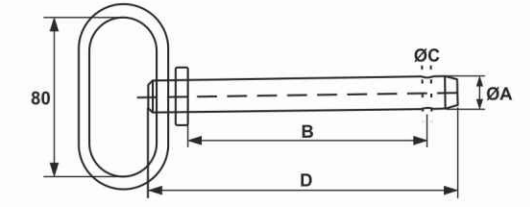


Code No.	A	B	C	D
HP 12090	12.7	90	4	125
HP 12105	12.7	105	3	142
HP 12110	12.7	110	4	147
HP 16105	15.9	105	4	136
HP 16149	15.9	149	3.5	186
HP 16162	16	162	4	199
HP 19098	19	98	4.5	130
HP 19110	19	110	4.5	147
HP 19157	19	157	4.5	194
HP 19162	19	162	4.5	199
HP 22110	22	110	5	147
HP 22157	22	157	5	194
HP 22162	22	162	5	199
HP 25103	25	103	5	140
HP 25110	25.4	110	5.5	147
HP 25158	25	158	6	194
HP 25162	25	162	6	199
HP 25181	25	181	6	214
HP 25118	25	118	6	155
HP 28183	28	183	7	220
HP 28162	28.5	162	6.5	199
HP 32162	32	162	7	199

# HITCH PIN

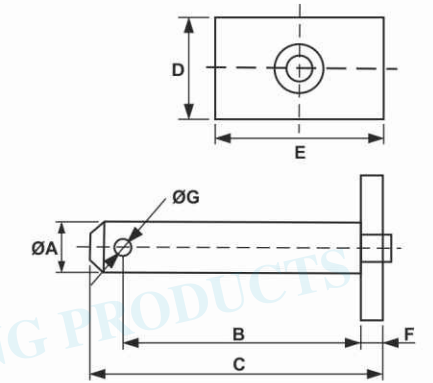


Orange Hitch Pin with Hair Pin



Code No.	A	B	C	D
OHP 16155	16	155	4	192
OHP 19104	19	104	5	141
OHP 19162	19	162	5	199
OHP 22168	22	168	5	205
OHP 25175	25.4	175	6	212

## SQUARE HEAD PIN

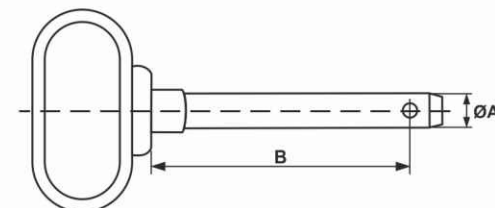


Code No.	A	B	C	D	E	F	G
SHP 19088	19	88	109	40	65	8	6
SHP 24088	24	88	109	40	65	8	6

## HITCH PIN

Red Handle Hitch Pin

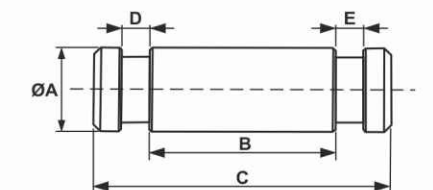
Code No.	A	B
RHHP 12095	12.7	95
RHHP 16105	15.8	105
RHHP 16143	15.8	143
RHHP 19105	19	105
RHHP 19165	19	165
RHHP 22105	22	105
RHHP 22165	22.4	165
RHHP 25118	25.4	115
RHHP 25133	25.4	133
RHHP 25203	25.4	203
RHHP 28220	28.5	220
RHHP 32220	31.75	220
RHHP 38220	38.1	220



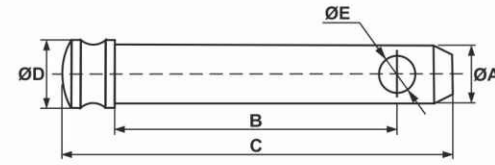
## CYLINDER PIN



Code No.	A	B	C	D	E
CP 18052	18	52	70	6	6
CP 18072	18	72	90	6	6
CP 18082	18	82	100	6	6
CP 20058	20	58	76	6	6
CP 22052	22	52	70	6	6
CP 24091	24	91	109	6	6
CP 26057	26	57	76	6	6
CP 28091	28	91	109	6	6



# TOP LINK PIN

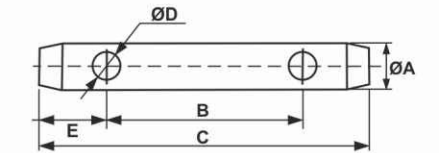


Code No.	A	B	C	D	E
TLP 16076	15.9	76	113	19	7
TLP 16082	15.9	82	112	19	7
TLP 19052	19	52	90	22	12
TLP 19057	19	57	90	22	12
TLP 19076	19	76	112	22	12
TLP 19092	19	92	127	22	12
TLP 19095	19	95	133	28	12
TLP 19105	19	105	135	28	10
TLP 19125	19	125	155	28	10
TLP 19145	19	145	175	28	10
TLP 22076	22	76	114	25	12
TLP 22094	22	94	132	25.4	12
TLP 22105	22	105	136	34	12
TLP 22110	22	110	140	25	12
TLP 22125	22	125	158	30	11
TLP 22145	22	145	178	30	11
TLP 25076	25	76	115	28	12
TLP 25085	25	85	124	32	11
TLP 25095	25	95	132	28	12
TLP 25125	25	125	156	32	11
TLP 25086	25.4	86	123	28	12
TLP 25110	25.4	110	148	28	12
TLP 25116	25.4	116	154	28	12
TLP 25142	25.4	142	180	28	12
TLP 28103	28	103	145	32	12
TLP 28125	28	125	156	34	12
TLP 28145	28	145	178	34	12
TLP 28159	28.6	159	197	32	12
TLP 31118	31.7	118	160	38	12
TLP 32105	32	105	145	42	12
TLP 32125	32	125	164	38	12
TLP 32136	32	136	175	38	12

# TOP LINK PIN

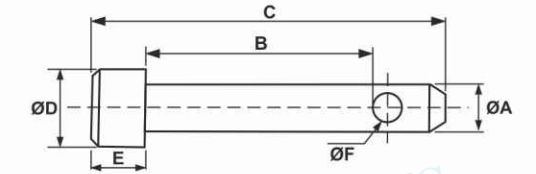


Top Link Pin without Head



Code No.	A	B	C	D	E
TLPH 19140	19	96	140	12	22
TLPH 19170	19	126	170	12	22
TLPH 19207	19	163	207	12	22
TLPH 19254	19	210	254	12	22
TLPH 25164	25	120	164	12	22

## SPECIAL TOP LINK PIN



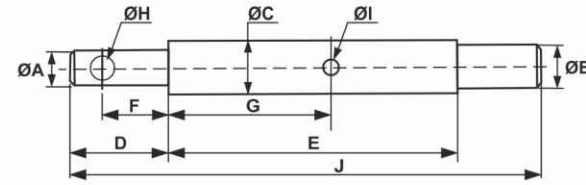
Code No.	A	B	C	D	E	F
TPL 120575	12	57	70	18	4	5
TPL 160815	16	81	98	24	4.5	6.5
TPL 160595	16	59	76	24	7	6.5
TPL 190605	19	60	82	27	7	6.5
TPL 190935	19	93	112	27	6	6.5
TPL 221205	22	120	151	37	15	8.5
TPL 221355	22	135	170	37	15	8.5
TPL 251205	25	120	158	40	15	8.5
TPL 251755	25	175	214	40	15	8.5
TPL 281555	28	155	193	45	15	10.5
TPL 190805	19	80	120	25	15	11.5
TPL 220605	22	60	95	28	15	11.5
TPL 250855	25	85	125	32	15	11.5
TPL 280605	28	60	95	34	15	11.5



# MOUNTING PIN



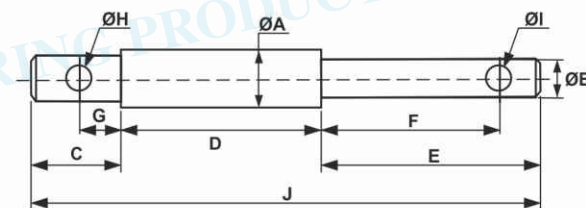
Inter Changeable Implement Mounting Pin



Code No.	A	B	C	D	E	F	G	H	I	J
IMP 20200	22	22	28	55	115	40	67	12	6.5	200
IMP 25200	25	22	28	55	115	40	67	12	6.5	200

# MOUNTING PIN

Double Implement Mounting Pin

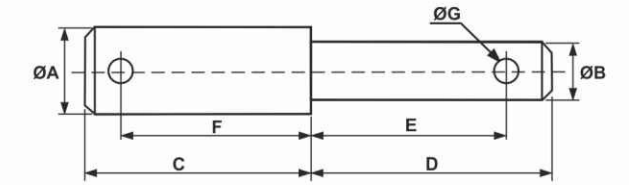


Code No.	A	B	C	D	E	F	G	H	I	J
DIMP 25210	25	19	40	70	100	80	20	12	12	210
DIMP 25212	25	19	38	96	78	62	22	12	12	212
DIMP 25170	25	19	26	66	78	70	18	6.5	6.5	170
DIMP 28200	28	22	35	75	90	75	20	12	12	200
DIMP 28210	28	22	40	70	100	80	20	12	12	210
DIMP 28230	28	22	40	90	100	80	20	12	12	230
DIMP 28229	28.6	22.2	40	89	100	80	20	12	12	229
DIMP 32250	32	25	40	115	95	81	26	12	12	250
DIMP 36277	36.5	28	36	150	91	81	26	12	12	277
DIMP 36290	36.5	28	45	150	95	80	28	12	12	290

# MOUNTING PIN

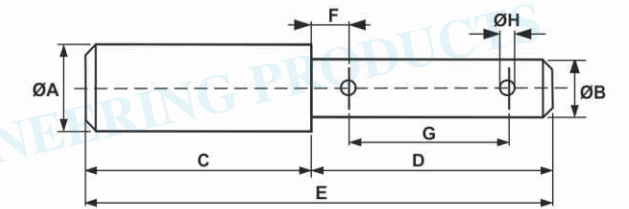


Weld on End Mounting Pin



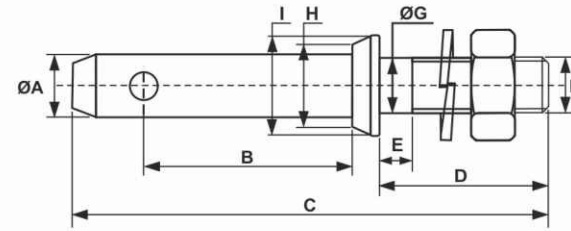
Code No.	A	B	C	D	E	F	G
WOEMP 0	28	22	62.5	84.5	70.5	47	12
WOEMP 1	28	22	76.5	104.5	88	60	12
WOEMP 2	28	22	85	105	85	62	12
WOEMP 3	28	22	103	78	60	87.3	12
WOEMP 4	28	22	120	56	39	92	12
WOEMP 5	28.6	22	76	105	87.3	60	12
WOEMP 6	34	28	61	80	62	43.5	12

# IMPLEMENT PIN



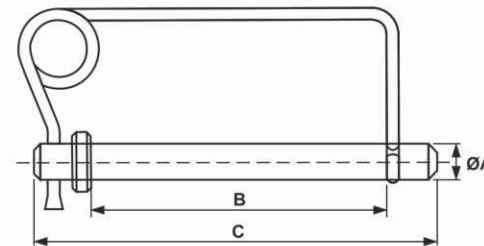
Code No.	A	B	C	D	E	F	G	H
IP 19156	19	16	74	82	156	16.5	55	5
IP 22168	22	16	80	88	168	12	68	5
IP 25166	25	19	85	81	166	18	53	5
IP 25160	25	19	80	80	160	18	53	5
IP 25180	25	19	90	90	180	18	57	5
IP 28180	28	22	90	90	180	18	57	5
IP 28175	28	22	90	85	175	16.5	50	6
IP 28180	28	22	90	90	180	16.5	61	6
IP 32178	32	25	83	95	178	18	62	6.5
IP 32172	32	25	80	92	172	22	55	6.5

# LOWER LINK PIN



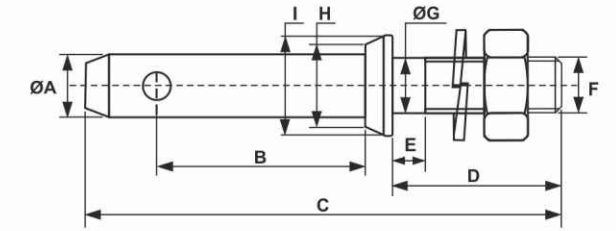
Code No.	A	B	C	D	E	F	G	H	I
LLP 2201	22	50	130	40	5	20 x 1.5	20	32	38
LLP 2202	22	50	140	40	14	22 x 1.5	22	30	38
LLP 2203	22	50	140	40	14	22 x 1.5	28	30	38
LLP 2204	22	51	149	54	11	7/8" UNF	22	30	36
LLP 2205	22	51	140	48	6	3/4" UNF	19	30	36
LLP 2206	22	51	140	43	11	5/8" UNF	22	30	36
LLP 2207	22	51	146	38	22	7/8" UNF	28.6	30	36
LLP 2208	22	51	146	50.8	9.5	7/8" UNC	28.6	32	38
LLP 2209	22	51	146	50.8	9.5	1" UNF	25.4	30	36
LLP 2210	22	51	138	38	14	7/8" UNF	28.6	30	36
LLP 2211	22	51	128	38	10	20 x 1.5	20	30	36
LLP 2212	22	51	128	38	10	20 x 1.5	20	30	36
LLP 2213	22	60	150	40	20	22 x 1.5	22	32	38
LLP 2214	22	60	150	40	20	22 x 1.5	28	32	38
LLP 2215	22	60	146	40	20	22 x 1.5	25	32	32
LLP 2216	22	51	140	45	10	7/8" UNF	22	30	34
LLP 2217	22	64	165	56	16	7/8" UNF	22.2	32	38
LLP 2518	25	60	150	40	20	22 x 1.5	25	34	40
LLP 2519	25	60	150	40	20	22 x 1.5	28	32	38
LLP 2820	28	50	155	30	50	30 x 2.0	30	48	50
LLP 2821	28	55	150	45	14	22 x 1.5	24	36	42
LLP 2822	28	55	150	45	15	24 x 1.5	24	37	43
LLP 2823	28	55	150	45	14	27 x 1.5	28	38	43

# WIRE LOCK HITCH PIN



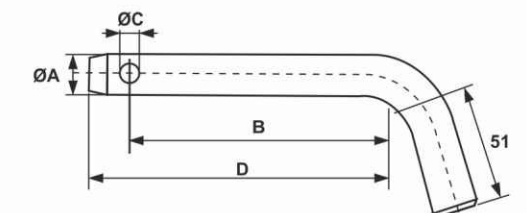
Code No.	A	B	C
WLHP 12102	12	102	140
WLHP 16102	16	102	140
WLHP 19102	19	102	140
WLHP 19152	19	152	190
WLHP 22152	22	152	190
WLHP 25152	25	152	190

# LOWER LINK PIN



Code No.	A	B	C	D	E	F	G	H	I
LLP 2824	28	58	147	48	10	27 x 1.5	27	37	43
LLP 2825	28	58	147	48	10	27 x 1.5	27	48	50
LLP 2826	28	60	150	45	14	22 x 1.5	22	38	44
LLP 2827	28	60	150	40	20	22 x 1.5	28	38	44
LLP 2828	28	60	150	40	20	22 x 1.5	22	38	44
LLP 2829	28	60	150	40	20	22 x 1.5	24	38	44
LLP 2830	28	62	147	38	20	22 x 1.5	28	48	50
LLP 2831	28	64	160	38	25	27 x 1.5	28	38	44
LLP 2832	28	65	160	30	40	30 x 2	30	48	50
LLP 2833	28	71	160	40	30	30 x 2	30	48	50
LLP 2834	28.6	51	133.5	42	11	7/8" UNF	22	37	43
LLP 2835	28	51	159	60	16	9/8" UNF	28.6	38	44
LLP 2836	28.6	51	149	36.5	24	3/4" UNF	25.4	38	44
LLP 2837	28.6	57	159	60	16	9/8" UNF	28.6	37	43
LLP 2838	28.6	60	149	51	9.5	9/8" UNF	28.6	37	43
LLP 2839	28.6	60	149	50.8	9.5	1" UNF	25.4	38	44
LLP 2840	28.6	60	149	54	6.3	3/4" UNF	19	38	44
LLP 2841	28.6	60	149	38	22	7/8" UNF	28.6	38	44
LLP 2842	28.6	60	136.5	35	12.7	7/8" UNF	22	38	44
LLP 2843	28.6	60	145	44	12.7	7/8" UNF	22	38	44
LLP 2844	28.6	63.15	160	54	14	7/8" UNF	22.2	38	44
LLP 3645	36	54	149	48	16	9/8" UNF	28.6	46	52
LLP 3646	36.5	58	149	45	14	1.3/8" UNF	35	45	52
LLP 3647	36.5	61	165	60	11	27 x 1.5	27	48	50

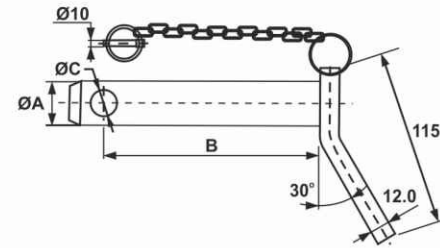
# BEND TYPE HITCH PIN



Code No.	A	B	C	D
BHP 12076	12.7	76	4	85
BHP 16076	15.9	76	5	88
BHP 16089	15.9	89	5	102
BHP 19089	19	89	5	102
BHP 19099	19	99	5	111

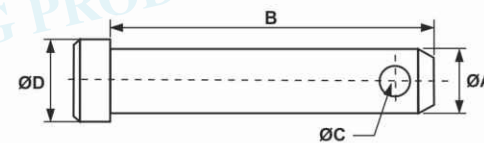


# BEND HANDLE HITCH PIN



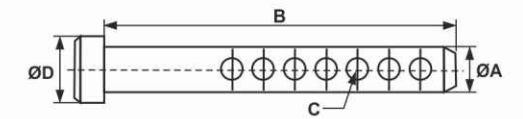
Code No.	A	B	C
BHP 19123	19	123	12
BHP 19135	19	135	12
BHP 19175	19	175	12
BHP 22123	22	123	12
BHP 22135	22	135	12
BHP 22175	22	175	12
BHP 25123	25	123	12
BHP 25135	25	135	12
BHP 25175	25	175	12
BHP 28135	28	135	12
BHP 28175	28	175	12
BHP 28123	28	123	12
BHP 32175	32	175	12

# STANDARD CLEVIS PIN



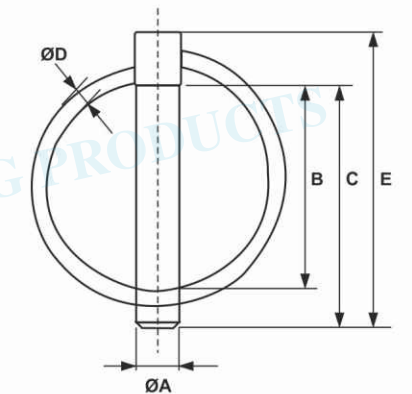
Code No.	A	B	C	D
SCP 4516	4.5	16	2.5	9
SCP 6020	6	20	2.5	10
SCP 6025	6	25	2.5	10
SCP 8019	8	19	3	12
SCP 8024	8	24	3	12
SCP 8028	8	28	3	12
SCP 8032	8	32	3	12
SCP 8038	8	38	3	12
SCP 8045	8	45	3	12
SCP 1025	10	25	4	12
SCP 1032	10	32	4	14
SCP 1045	10	45	4	14
SCP 1132	11	32	4	15
SCP 1145	11	45	4	15
SCP 1238	12	38	4	16
SCP 1250	12	50	4	16

# UNIVERSAL CLEVIS PIN



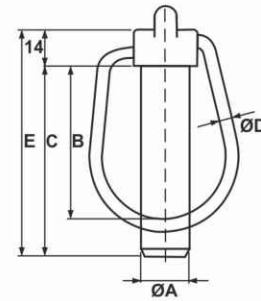
Code No.	A	B	C	D	No. of Hole
UCP 6050	6	50	2.5	9	6.5
UCP 8050	8	50	3	12	8.5
UCP 1050	10	50	4	14	10.20
UCP 1150	11	50	4	15	5
UCP 1163	11	63	4	15	5
UCP 1176	11	76	4	15	7
UCP 1250	12	50	4	16	5
UCP 1263	12	63	4	16	7
UCP 1276	12	76	4	16	16.30
UCP 1676	16	76	5	20	18.41
UCP 1976	19	76	6	24	22.04

# LINCH PIN



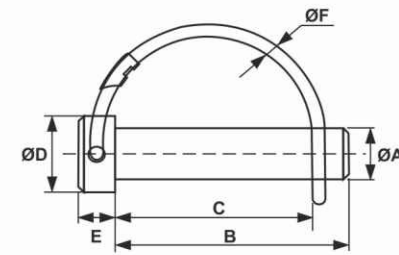
Code No.	A	B	C	E	D
LP 45035	4.5	28.6	35	44	3
LP 45041	4.5	33	41	51	3
LP 47035	4.76	28.6	35	44	3
LP 60045	6	36.5	45	54	3.2
LP 60045HD	6	36.5	45	54	3.7 Black
LP 63045	6.35	36.5	45	54	3.2
LP 70045	7	36.5	45	55	3.3
LP 80045	8	36.5	45	54	3.3
LP 80045HD	8	36.5	45	54	3.7 Black
LP 90045	9	36.5	45	56	3.3
LP 90051	9.5	39	51	62	3.3
LP 10045	10	36.5	45	56	3.5
LP 11045	11	36.5	45	56	3.5
LP 11051HD	11	39	51	66	4 Black
LP 11051	11	39	51	62	3.5

# FORGED LINCH PIN

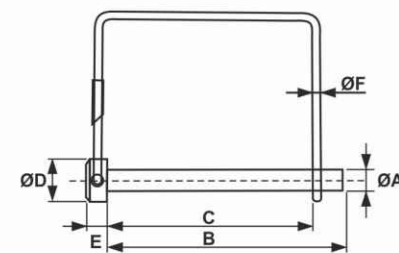


Code No.	A	B	C	D	E
FLP 11	11	48	52	4	66
FLP 15	15	56	60	4	74

# PTO PIN



Code No.	A	B	C	D	E	F
PTOP 0638	6	45	38	12	6	2.5
PTOP 0658	6	65	58	12	6	2.5
PTOP 0838	8	45	38	15	7	2.5
PTOP 0858	8	65	58	15	7	2.5
PTOP 1038	10	45	38	18	8	2.5
PTOP 1058	10	65	58	18	8	2.5

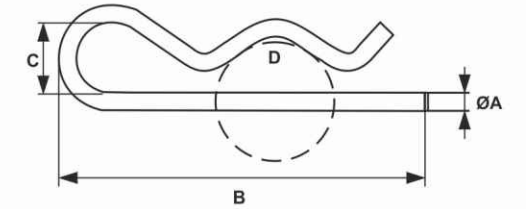


Code No.	A	B	C	D	E	F
PTOP 06455	6	53	45	12	6	2.5
PTOP 06575	6	65	57	12	6	2.5
PTOP 08575	8	65	57	15	7	2.5
PTOP 08635	8	70	63	15	7	2.5
PTOP 10575	10	65	57	18	8	2.5
PTOP 10635	10	70	63	18	8	2.5
PTOP 10705	10	80	70	18	10	2.5

# HAIR PINS



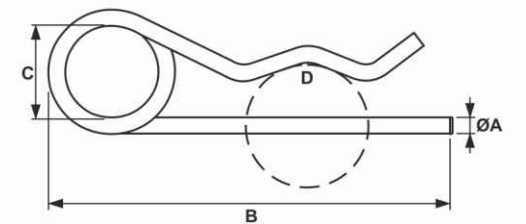
Grip Clip, Single Spire



Code No.	A	B	C	D
HP 520044	2	44	13	10-12
HP 520051	2	51	13	10-12
HP 520057	2	57	17	10-12
HP 525046	2.5	46	13	11-13
HP 525062	2.5	62	13	11-13
HP 530052	3	52	18	12-16
HP 530061	3	61	18	12-16
HP 535067	3.5	67	18	15-21
HP 535080	3.5	80	18	15-21
HP 540076	4	76	18	16-30
HP 540083	4	83	18	16-30
HP 540090	4	90	18	16-30
HP 545083	4.5	83	20	16-30
HP 545093	4.5	93	20	20-30
HP 550100	5	100	24	20-35
HP 550108	5	108	30	20-35
HP 560114	6	114	24	28-45
HP 560120	6	120	30	28-45
HP 560115	6	115	42	28-45
HP 570105	7	105	42	30-42
HP 570163	7	163	45	30-45
HP 580156	8	156	52	30-45
HP 580162	8	162	45	45-60
HP 510160	10	158	42	30-45

# HAIR PINS

Grip Clip, Double Spire



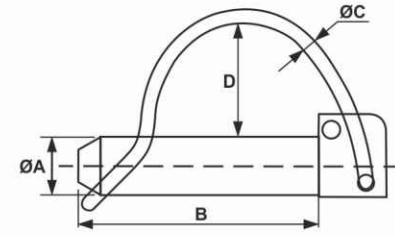
Code No.	A	B	C	D
HP 02065	2	65	13	10-12
HP 03071	3	71	18	12-16
HP 04077	4	77	22	16-30
HP 04093	4	93	22	17-24
HP 05116	5	116	26	17-28
HP 06143	6	143	30	32-48
HP 07162	7	162	30	30-45



# LINCH PIN FOR TUBE



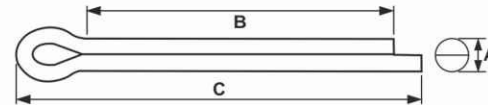
With Square Head



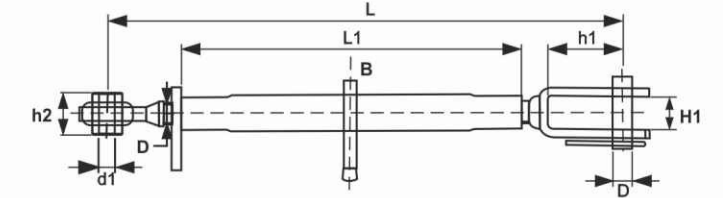
Code No.	A	B	C	D
LPT 0640	6	40	3	18
LPT 0645	6	45	3	22
LPT 0840	8	40	3	18
LPT 0845	8	45	3	22
LPT 0850	8	50	3	25
LPT 1050	10	50	4	25
LPT 1058	10	58	4	25
LPT 1258	12	58	4	25

## SPLIT PINS

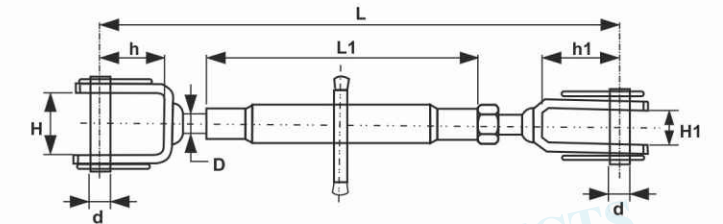
Code No.	A	B	C
SP 1620	1.6	20	28
SP 1625	1.6	25	33
SP 2020	2	20	28
SP 2025	2	25	33
SP 2028	2	28	35
SP 2032	2	32	40
SP 2040	2	40	50
SP 2520	2.5	20	28
SP 2540	2.5	40	50
SP 3225	3.2	25	35
SP 3240	3.2	40	50
SP 4025	4	25	35
SP 4032	4	32	45
SP 4036	4	36	48
SP 5050	5	50	63
SP 5070	5	70	85
SP 6350	6.3	50	64
SP 6370	6.3	70	85
SP 6380	6.3	80	98
SP 8063	8	63	87
SP 8080	8	80	104
SP 80100	8	100	124
SP 80125	8	125	150
SP 1063	10	63	91
SP 10125	10	125	153
SP 13125	15	125	160
SP 13140	13	140	175



# ADJUSTABLE LEVELING ARM

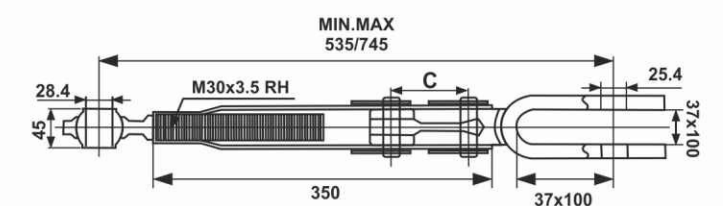


Code No.	L		L1	D	d	H1	h1	d1	h2
	Min.	Max.							
ALA 19230	380	530	230	24 x 3	18	24	72	19.2	44
ALA 22230	380	530	230	24 x 3	18	24	72	22.1	35
ALA 19260	410	560	260	24 x 3	18	24	72	19.2	44
ALA 22260	410	560	260	24 x 3	18	24	72	22.1	35
ALA 22340	490	700	340	24 x 3	16	24	72	22.1	35
ALA 22380	520	730	380	24 x 3	16	24	72	22.1	35

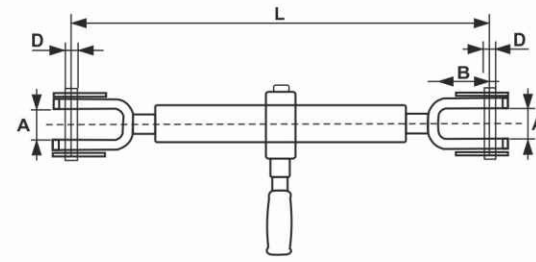


Code No.	L		L1	D	d	H	h	H1	h1
	Min.	Max.							
ALA 18200	380	530	200	22 x 2.5	18	30	60	24	72
ALA 18260	450	600	260	24 x 3	18	40	70	24	72
ALA 18290	500	650	290	27 x 3	18	40	70	24	72

## LEVELING ASSEMBLY

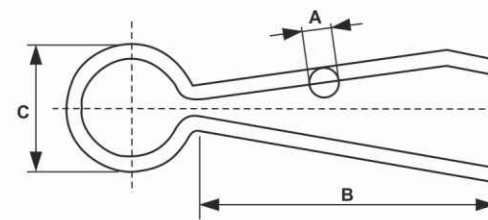
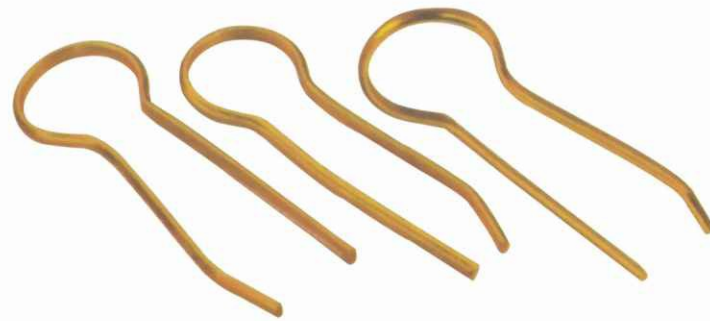


## RATCHET JACK



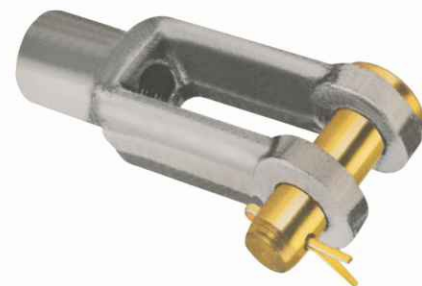
Code No.	L		A	B	C
	Min.	Max.			
RJ 25	510	710	38	55	25.4

## CLIPS

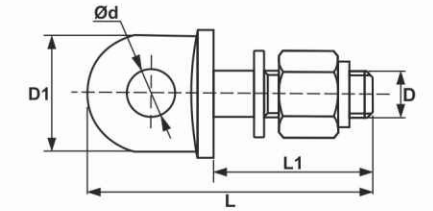


Code No.	A	B	C
CP 315	3 x 1.5	38	17
CP 525	5 x 2.5	56	27

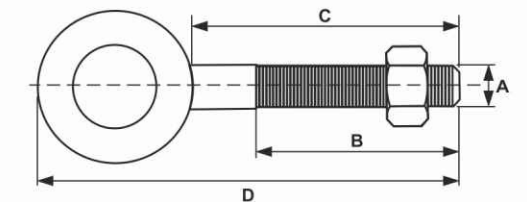
## CLEVIS YOKE



## EYE END

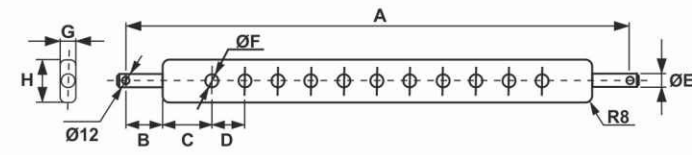


Code No.	D	L	Ød	D1	L1
EE 16	16 x 1.5	80	15	36	43
EE 18	18 x 2.5	80	15	36	43
EE 20	20 x 2.5	100	18	45	56
EE 24	24 x 2	125	24	53	65



Code No.	A	B	C	D	E
EE 101	1/4"	1-1/2"	2"	3"	1/2"
EE 102	5/16"	1-1/2"	2-1/4"	3-1/2"	5/8"
EE 103	3/8"	1-1/2"	2-1/2"	4"	3/4"
EE 104	1/2"	1-1/2"	3-1/4"	5-1/4"	1"
EE 105	6/8"	1-3/4"	4"	6-1/2"	1-1/4"
EE 106	1/4"	2-1/2"	4"	5"	1/2"
EE 107	5/16"	2-1/2"	4-1/4"	5-1/2"	5/8"
EE 108	3/8"	2-1/2"	6"	7-1/2"	3/4"
EE 109	1/2"	3"	6"	7-3/4"	1"





### Draw Bar (63 x 25)

Code No.	H	G	Hole	A	B	C	D	E	F
DB 00	63	25	7	505	51	66.5	45	22	20
DB 01	63	25	7	770	50	105	76.66	22	22
DB 02	63	25	7	610	51	84.5	57	22	19
DB 03	63	25	7	610	51	84.5	57	22	22
DB 04	63	25	11	775	57	75	51	22	19
DB 05	63	25	11	775	57	75	51	22	22
DB 06	63	25	9	775	57	114	54	22	19
DB 07	63	25	11	766	53	60	54	22	20



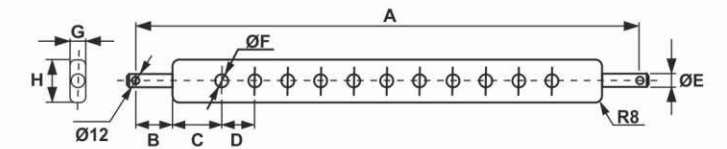
### Draw Bar (63 x 30)

Code No.	H	G	Hole	A	B	C	D	E	F
DB 08	63	30	7	1003	60	181	80	28.5	25.4
DB 09	63	30	7	683	49	113	54	22	20
DB 10	63	30	9	758	49	114	54	22	20
DB 11	63	30	9	781	60	114	54	28.5	20
DB 12	63	30	7	962	60	181	80	28.5	28
DB 13	63	30	9	796	57.5	125	55	21.6	22.2
DB 14	63	30	9	800	70	113.3	54	28	22
DB 15	63	30	11	766	60	60	54	28	20
DB 16	63	30	11	945	60	114	60	28	22
DB 17	63	30	9	800	58	118	22	22	22
DB 18	63	30	9	800	126	51	70	28	22
DB 19	63	30	11	765	52	60	54	22	22
DB 20	63	30	11	781	60	60	54	28	22
DB 21	63	30	9	770	55	110	55	22	20
DB 22	63	30	9	770	55	110	55	28	20
DB 23	63	30	3	440	55	110	55	22	20
DB 24	63	30	11	766	53	60	54	22	20
DB 25	63	30	11	780	60	60	54	28	20
DB 26	63	30	3	440	57	110	54	22	19
DB 27	63	30	9	800	70	114	54	28	22
DB 28	63	30	11	810	60	75	54	28.5	20
DB 29	63	30	9	620	50	71	47.5	22	26



### Draw Bar (80 x 40)

Code No.	H	G	Hole	A	B	C	D	E	F
DB 30	80	40	7	930	55	110	100	28	28
DB 31	80	40	3	770	56	16.5	16.6	28	26.5
DB 32	80	40	7	861	60.3	122	83	28	26.5
DB 33	80	40	7	1085	60	151	110	36	32
DB 34	80	40	7	940	60	121	83	28.4	26



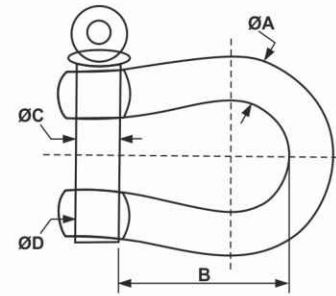
### Draw Bar (70 x 30)

Code No.	H	G	Hole	A	B	C	D	E	F
DB 35	70	30	1	770	54.8	329	N.A.	27.8	26
DB 36	70	30	3	772	54.8	163	165.2	27.8	26
DB 37	70	30	3	674	55	139.5	140	28	22.7
DB 38	70	30	3	900	55	197.5	197.5	28.4	28.5
DB 39	70	30	3	960	55	212.5	212.5	28.4	28.5
DB 40	70	30	11	960	55	155	155	28	26

### Draw Bar (76 x 32)

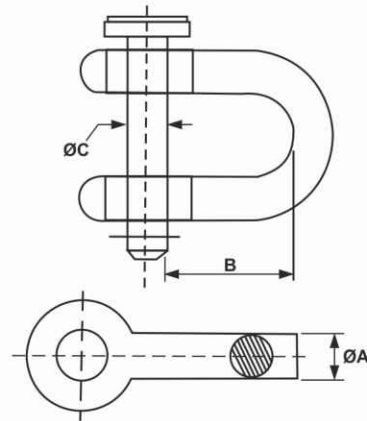
Code No.	H	G	Hole	A	B	C	D	E	F
DB 41	76	32	11	780	60	75	51	28	19
DB 42	76	32	11	780	60	75	51	28	22
DB 43	76	32	13	940	60	76	55.5	28	19
DB 44	76	32	13	940	60	76	55.5	28	22
DB 45	76	32	7	880	50	100	96	28	28
DB 46	76	32	9	920	50	90	80	28	33
DB 47	76	32	7	930	55	85	108.5	28	26
DB 48	76	32	9	945	60	92.5	80	28	33
DB 49	76	32	11	933	55	157.5	50.8	28	22
DB 50	76	32	7	960	59	103.5	71.5	28	26.5
DB 51	76	32	7	861	60.5	123.5	82.2	28.4	27
DB 52	76	32	13	933	60	76.4	55	28.6	19
DB 53	76	32	7	890	55	124	88.6	28	28
DB 54	76	32	3	772	55.5	165	166	22.6	26.6
DB 55	76	32	7	940	60	148	86	28.4	28.5
DB 56	76	32	7	910	50	85	110	28	26
DB 57	76	32	9	930	60	86	80	28	28
DB 58	76	32	9	945	60	92.5	80	28	33
DB 59	76	32	11	960	62	143	55	28	28
DB 60	76	32	7	981	60	151	86	28.4	28.5

# CLEVIS SCREW PIN



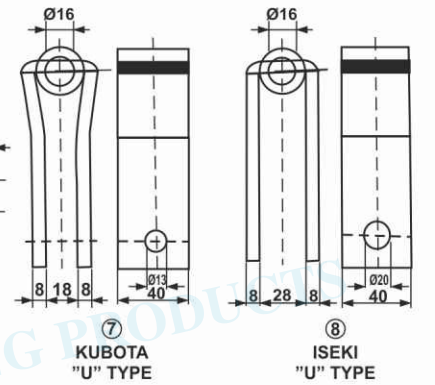
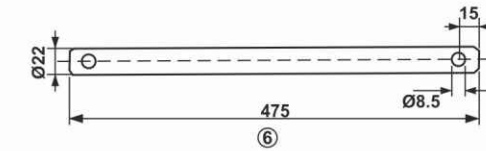
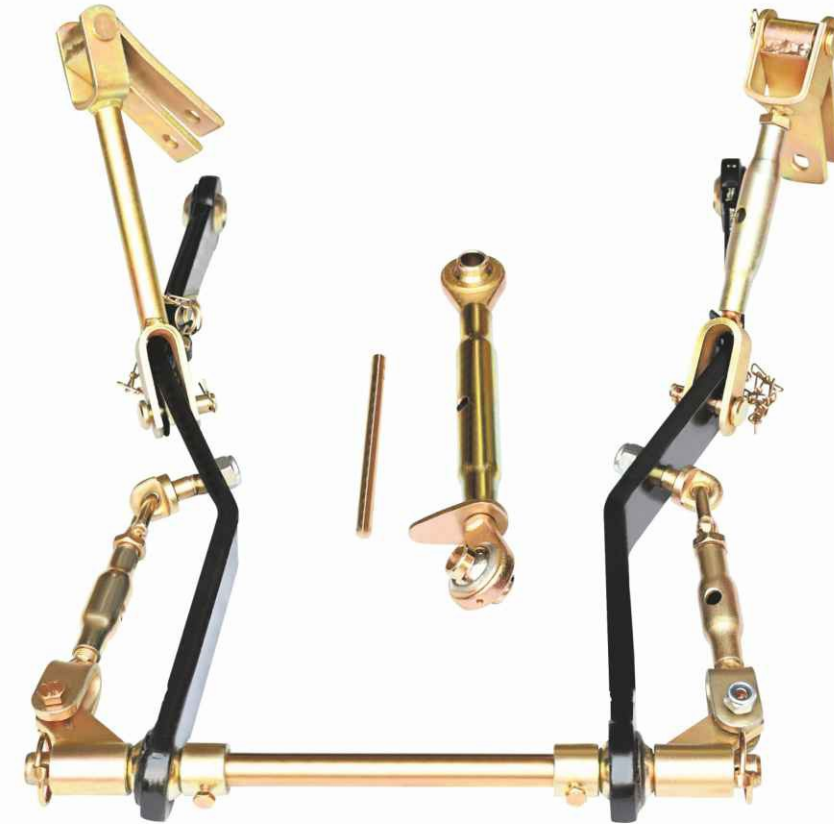
Code No.	Body Dia ØA mm	Usable Length B mm	Body Dia ØC mm	Body Dia ØD mm	Weight Kg.
CS 01	6.35	25.87	7.93	5/16" UNC	0.14
CS 02	7.93	31.75	9.52	3/8" UNC	0.22
CS 03	9.52	36.51	11.11	7/16" UNC	0.31
CS 04	11.11	42.85	12.7	1/2" UNC	0.53
CS 05	12.7	49.21	15.87	5/8" UNC	0.75
CS 06	15.87	63.5	19.05	3/4" UNC	1.1
CS 07	19.05	76.2	22.22	7/8" UNC	2.75
CS 08	22.22	82.55	25.4	1" UNC	3.58
CS 09	25.4	95	28.57	1-1/8" UNC	5.4
CS 10	28.57	107.95	31.75	1-1/4" UNC	7
CS 11	31.75	114.3	34.92	1-3/8" UNC	9.5

# CLEVIS (UTILITY)

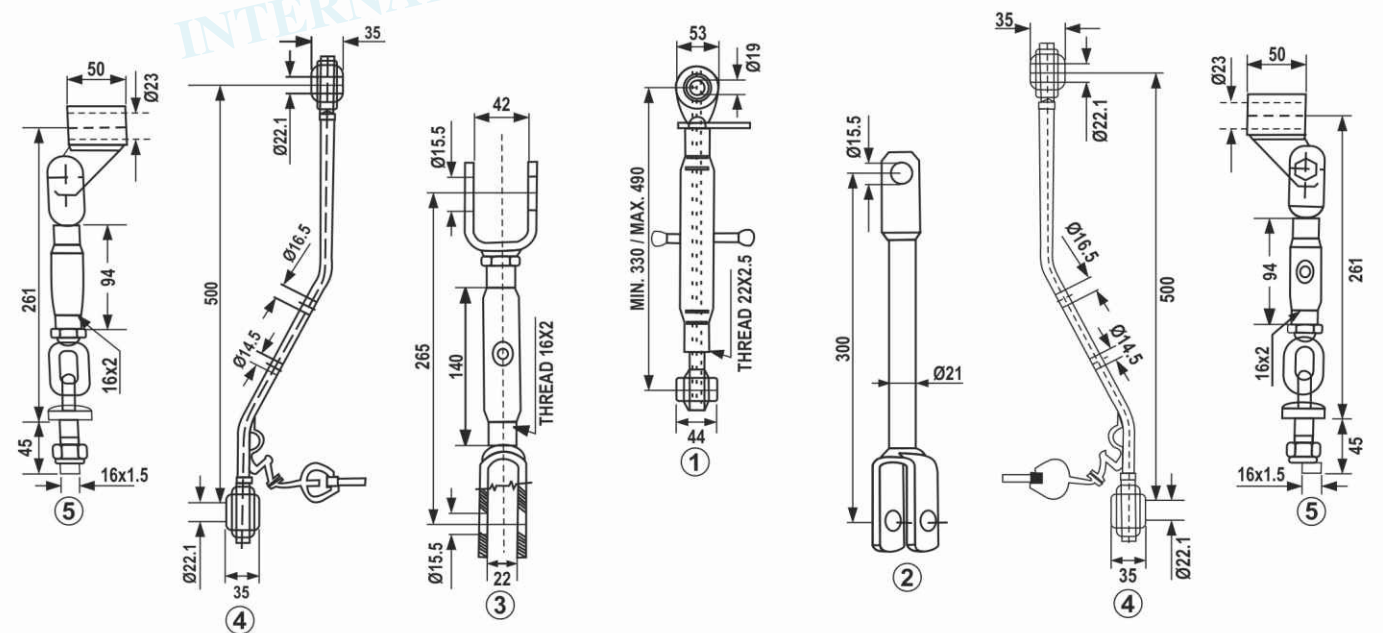


Code No.	Body Dia ØA mm	Usable Length B mm	Body Dia ØC mm	Weight Kg.
CU 01	6.35	22.22	7.93	0.1
CU 02	7.93	25.4	9.52	0.17
CU 03	9.52	31.75	11.11	0.28
CU 04	11.11	38.05	12.7	0.42
CU 05	12.7	42.86	15.87	0.66
CU 06	15.87	50.8	19.05	1.2

# 3POINT LINKAGE SYSTEM



KTL 01 : KUBOTA Type Kits  
KTL 02 : ISEKI Type Kits  
With Top Link Assembly







INTERNATIONAL ENGINEERING PRODUCTS



INTERNATIONAL ENGINEERING PRODUCTS



INTERNATIONAL ENGINEERING PRODUCTS



INTERNATIONAL ENGINEERING PRODUCTS





INTERNATIONAL ENGINEERING PRODUCTS



INTERNATIONAL ENGINEERING PRODUCTS